

INSTALLATION MANUAL

PRODUCT: REAR DIFFERENTIAL SKID PLATE

APPLICATION: SUZUKI JIMNY (2018-PRESENT)

PART NO: 2333.5523.2.6



CAUTION!

To reduce the risk of serious injury or damage to property: Before you start installing and using this product, read the full instructions, pay special attention to the conditions of safe use and recommendations for installation! When installing or maintaining this product, it is necessary to use protective goggles. Check the integrity of the structure and the moment the fastening is tightened every 250 miles (400 kms) of mileage. Do not use this product if there is damage to the structure or fasteners!

NOTICE

Skid plate is an additional protection, but it can not guarantee to protect against all possible damage in collisions. When driving, be careful of objects and terrain that may damage sensitive parts of the vehicle.

DIFFERENTIAL SKID PLATE

Part number 2333.5523.2.6

Suited to vehicle: Suzuki Jimny (2018-Present), V-1.5

Material: Aluminum



SAFETY NOTICE

- * The RIVAL skid plate is designed to complement the use and design of the specified vehicle under conditions specified by the vehicle manufacturer.
- * While driving the vehicle at any speed, collision with any other vehicle, animal or object must always be avoided.
- * Following any collision with any other vehicle, animal or object, the RIVAL skid plate and the vehicle must be inspected by a specialized or suitably qualified vehicle repairer for possible damage to the components and assemblies in order to confirm suitability for further use of the vehicle.
- * It is strongly recommended that you do not operate a vehicle with a damaged skid plate or its components. In the case of damage, please contact the nearest RIVAL dealer. Vehicle, or where the skid plate has been damaged, is extremely dangerous and must be avoided at all cost.

INSTALLATION NOTICE

- * The RIVAL skid plate must be mounted and affixed to the vehicle according to this installation manual.
- * Personal safety during the installation process must be adhered to at all times.
- * Do not install this skid plate on vehicle models other than those allowed in this manual.
- * Estimated time for installation: 1 hour.

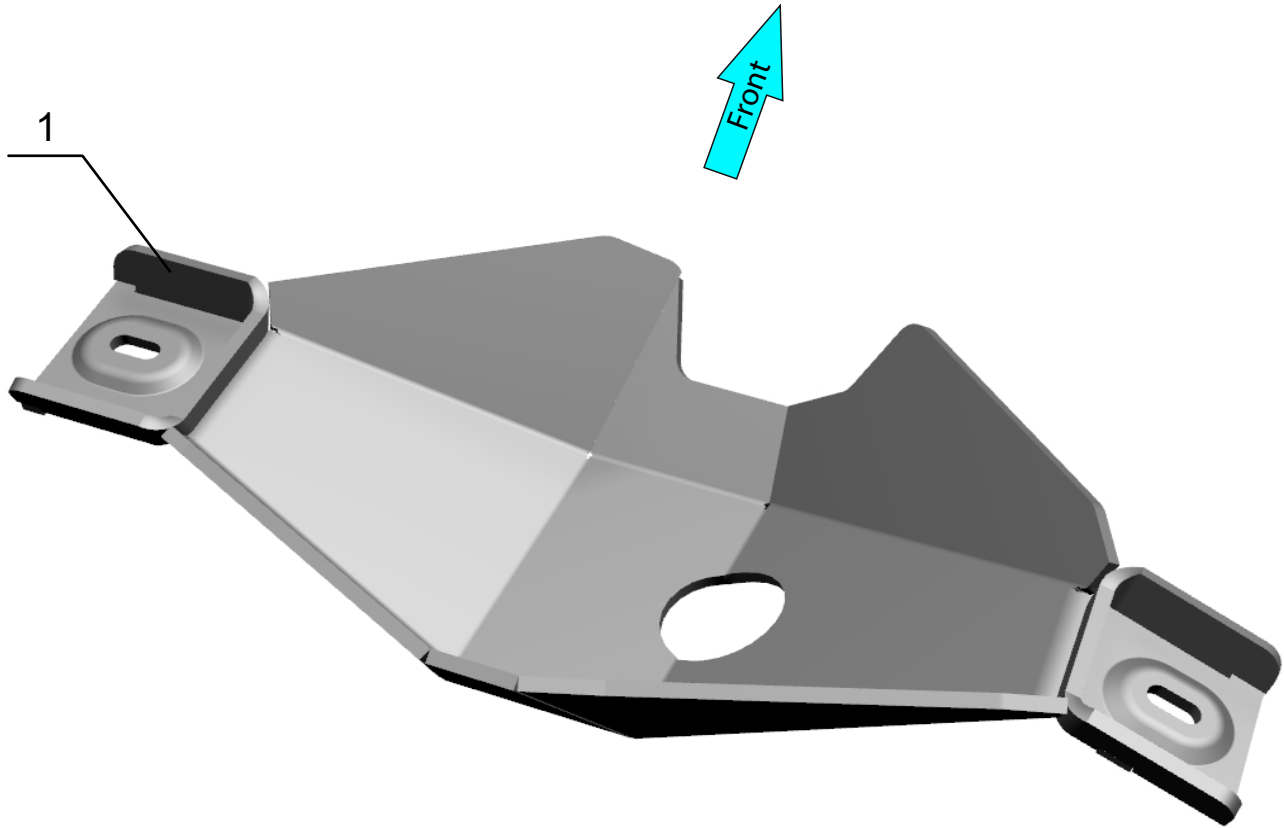
REQUIRED TOOLS

- * Basic tool kit
- * Torque wrench

TORQUE SETTING

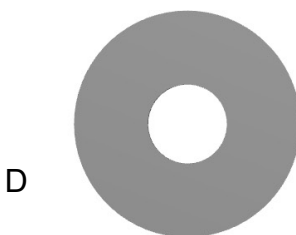
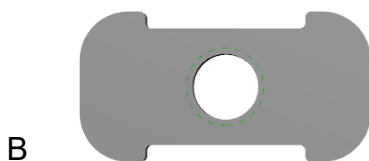
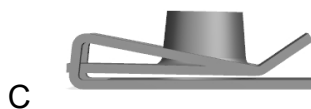
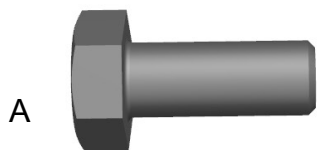
- * M8 - 24 H·m (17.7 lb/ft)

PARTS LISTING



1. Skid plate.....Qty 1

PARTS LISTING



A. Bolt M8x20.....	Qty 2
B. Insert nut M8.....	Qty 1
C. Cage nut M8.....	Qty 1
D. Washer 8.....	Qty 2

INSTALLATION PROCEDURE

*If equipped, remove any other aftermarket skid plate.



Fig. 1



Fig. 2

1. Install cage nut M8 (item C), as shown in fig. 2.



Fig. 3



Fig. 4

2. Install insert nut M8 (item B) as shown in fig. 4.

INSTALLATION PROCEDURE

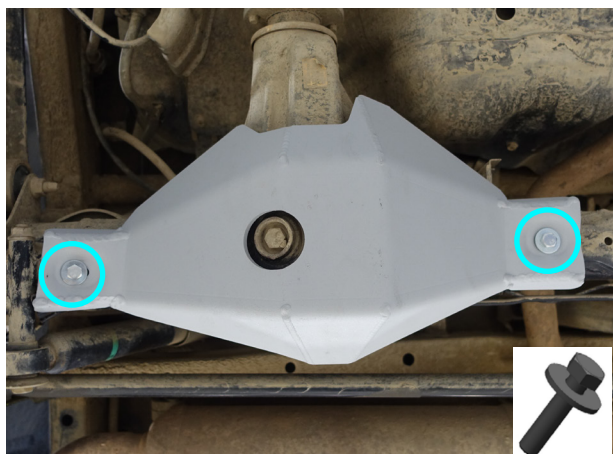


Fig. 5

3. Fix skid plate, using bolts M8x20 (item A) and washers 8 (item D) (Fig. 5).
***Tighten hardware after that.**

INSTALLATION PROCEDURE

Before operating a vehicle fitted with RIVAL Skid Plate:

- make sure all fittings are tightened;
- ensure the integrity of the structure and its components.



INSTALLATION MANUAL

PRODUCT: FUEL TANK SKID PLATE

APPLICATION: SUZUKI JIMNY (2018-Present)

PART NO: 2333.5524.2.6



CAUTION!

To reduce the risk of serious injury or damage to property: Before you start installing and using this product, read the full instructions, pay special attention to the conditions of safe use and recommendations for installation! When installing or maintaining this product, it is necessary to use protective goggles. Check the integrity of the structure and the moment the fastening is tightened every 250 miles (400 kms) of mileage. Do not use this product if there is damage to the structure or fasteners!

NOTICE

Skid plate is an additional protection, but it can not guarantee to protect against all possible damage in collisions. When driving, be careful of objects and terrain that may damage sensitive parts of the vehicle.

FUEL TANK SKID PLATE

Part number 2333.5524.2.6

Suited to vehicle: Suzuki Jimny (2018-Present), 1.5 AT 4WD

Material: Aluminum



SAFETY NOTICE

- * The RIVAL skid plate is designed to complement the use and design of the specified vehicle under conditions specified by the vehicle manufacturer.
- * While driving the vehicle at any speed, collision with any other vehicle, animal or object must always be avoided.
- * Following any collision with any other vehicle, animal or object, the RIVAL skid plate and the vehicle must be inspected by a specialized or suitably qualified vehicle repairer for possible damage to the components and assemblies in order to confirm suitability for further use of the vehicle.
- * It is strongly recommended that you do not operate a vehicle with a damaged skid plate or its components. In the case of damage, please contact the nearest RIVAL dealer. Vehicle, or where the skid plate has been damaged, is extremely dangerous and must be avoided at all cost.

INSTALLATION NOTICE

- * The RIVAL skid plate must be mounted and affixed to the vehicle according to this installation manual.
- * Personal safety during the installation process must be adhered to at all times.
- * Do not install this skid plate on vehicle models other than those allowed in this manual.
- * Estimated time for installation: 1 hour.

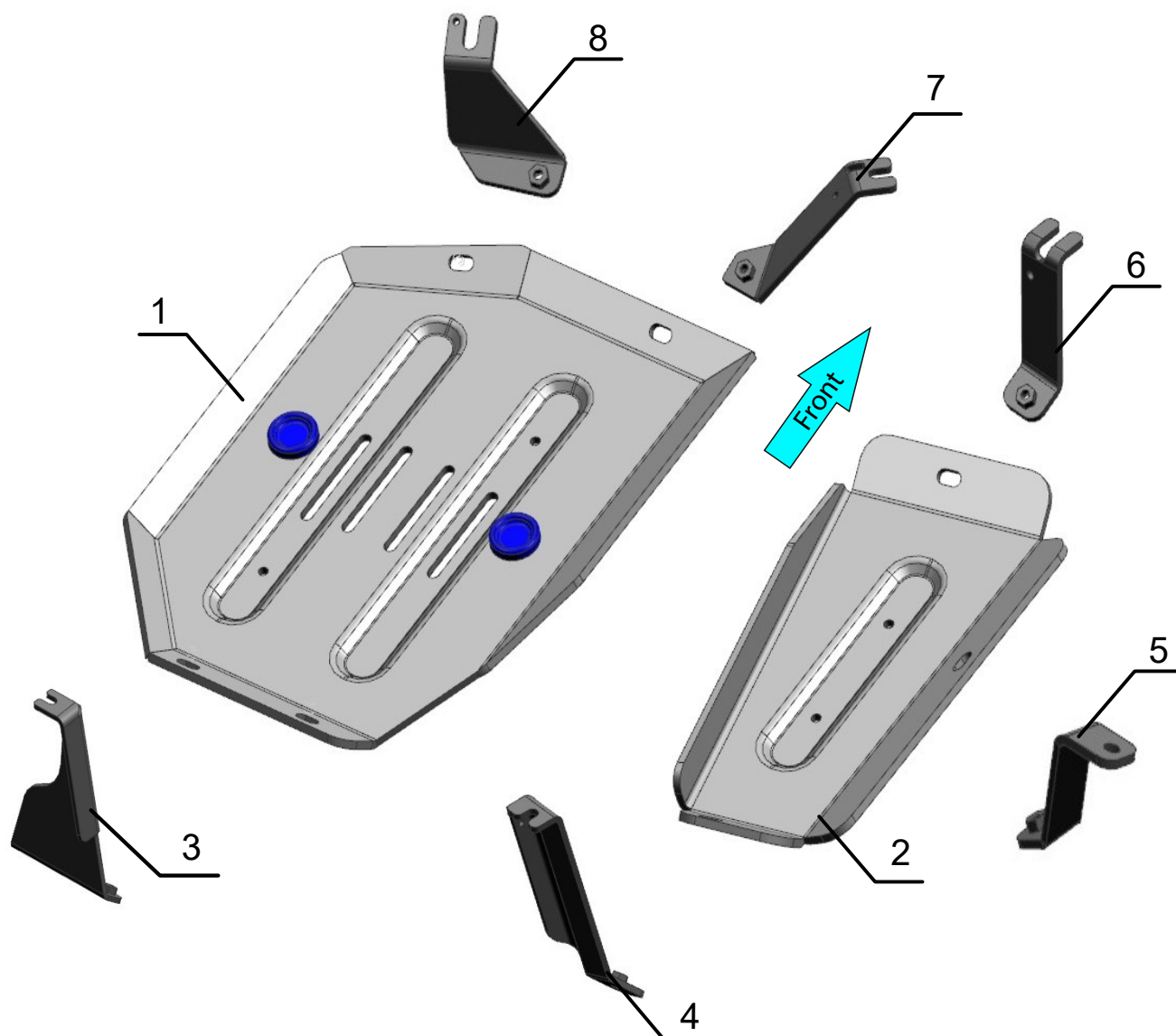
REQUIRED TOOLS

- * Basic tool kit
- * Torque wrench

TORQUE SETTING

- * M8 - 24 H·m (17.7 lb/ft)

PARTS LISTING



1. Left fuel tank skid plate.....	Qty 1
2. Right fuel tank skid plate	Qty 1
3. Bracket 1.....	Qty 1
4. Bracket 2.....	Qty 1
5. Bracket 3.....	Qty 1
6. Bracket 4.....	Qty 1
7. Bracket 5.....	Qty 1
8. Bracket 6.....	Qty 1

PARTS LISTING

A



B



C



D



E



F



A. Insert nut M8.....	Qty 1
B. Bolt M8x25.....	Qty 1
C. Bolt M8x20.....	Qty 8
D. Bolt M6x25.....	Qty 1
E. Penny washer 8.....	Qty 9
F. Penny washer 6.....	Qty 1

INSTALLATION PROCEDURE

***If equipped, remove any other aftermarket skid plate.**



Fig. 1

1. Loosen OE bolt and use it to install bracket 1 (item 3) as shown in fig.1.

***Do not tighten yet.**

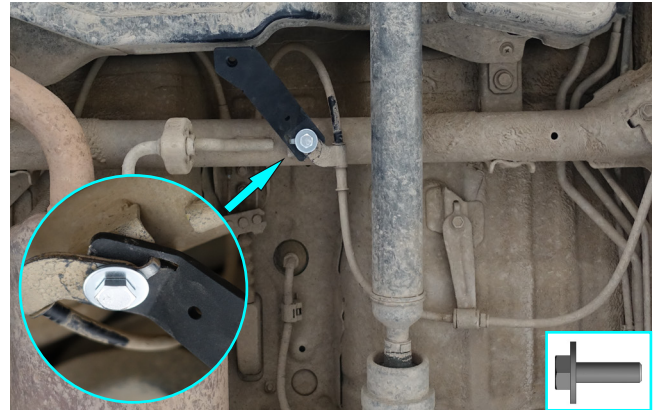


Fig. 2

2. Unscrew OE bolt and install bracket 5 (item 7) using bolt M8x20 and penny washer 8 (item C, E) as shown in fig.2.

***Do not tighten yet.**

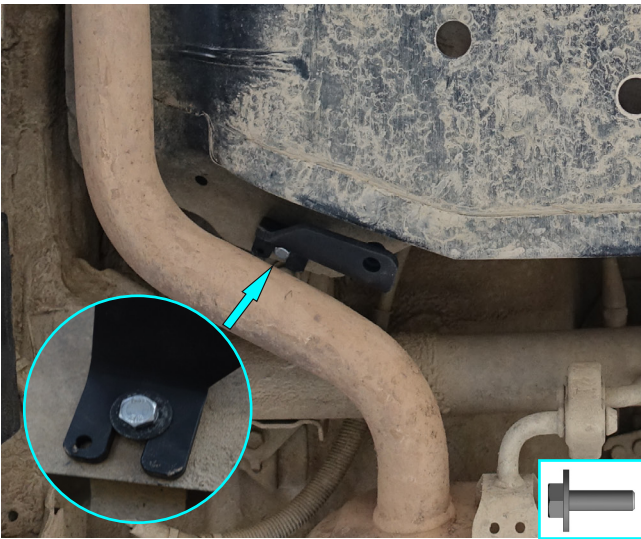


Fig. 3

3. Unscrew OE bolt and install bracket 6 (item 8) using bolt M6x25 and penny washer 6 (item D, F) as shown in fig.3.

***Do not tighten yet.**

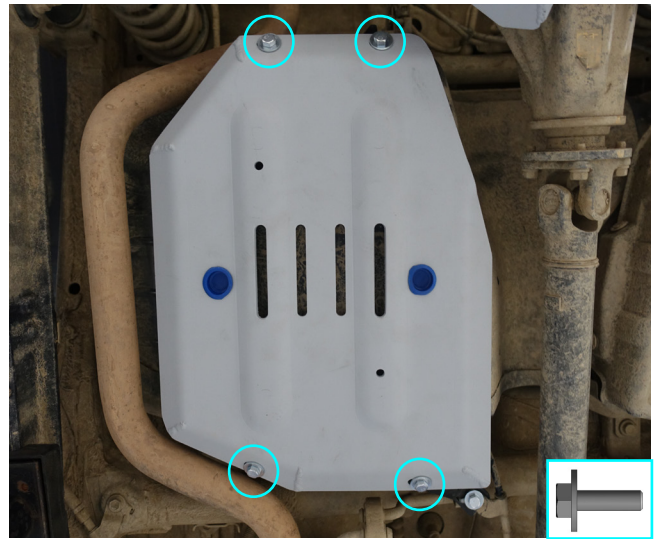


Fig. 4

4. Install left fuel tank skid plate (item 1) and fix it using bolts M8x20 and penny washers 8 (item C, E) (fig.4).

***Tighten hardware after that.**

INSTALLATION PROCEDURE



Fig. 6

6. Unscrew OE bolt and install bracket 2 (item 4) using OE bolt as shown in fig.6.

***Do not tighten yet.**



Fig. 7

7. Loosen OE bolt and use it to install bracket 4 (item 6) as shown in fig.7.

***Do not tighten yet.**



Fig. 8

8. Install insert nut M8 (item A) as shown in fig.8.



Fig. 9

9. Install bracket 3 (item 5) using bolt M8x25 and penny washer 8 (item B, E) as shown in fig.9.

***Do not tighten yet.**



Fig. 10

10. Install right fuel tank skid plate (item 2) using bolts M8x20 and penny washers 8 (item C, E) (fig.10).

***Tighten hardware after that.**

INSTALLATION PROCEDURE

Before operating a vehicle fitted with RIVAL skid plate:

- make sure all fittings are tightened;
- ensure the integrity of the structure and its components.



INSTALLATION MANUAL

PRODUCT: GEARBOX SKID PLATE

APPLICATION: SUZUKI JIMNY (2018-PRESENT)

PART NO: 2333.5525.2.6



CAUTION!

To reduce the risk of serious injury or damage to property: Before you start installing and using this product, read the full instructions, pay special attention to the conditions of safe use and recommendations for installation! When installing or maintaining this product, it is necessary to use protective goggles. Check the integrity of the structure and the moment the fastening is tightened every 250 miles (400 kms) of mileage. Do not use this product if there is damage to the structure or fasteners!

NOTICE

Skid plate is an additional protection, but it can not guarantee to protect against all possible damage in collisions. When driving, be careful of objects and terrain that may damage sensitive parts of the vehicle.

GERBOX SKID PLATE

Part number 2333.5525.2.6

Suited to vehicle: Suzuki Jimny (2018-Present), V-1.5

Material: Aluminum



SAFETY NOTICE

- * The RIVAL skid plate is designed to complement the use and design of the specified vehicle under conditions specified by the vehicle manufacturer.
- * While driving the vehicle at any speed, collision with any other vehicle, animal or object must always be avoided.
- * Following any collision with any other vehicle, animal or object, the RIVAL skid plate and the vehicle must be inspected by a specialized or suitably qualified vehicle repairer for possible damage to the components and assemblies in order to confirm suitability for further use of the vehicle.
- * It is strongly recommended that you do not operate a vehicle with a damaged skid plate or its components. In the case of damage, please contact the nearest RIVAL dealer. Vehicle, or where the skid plate has been damaged, is extremely dangerous and must be avoided at all cost.

INSTALLATION NOTICE

- * The RIVAL skid plate must be mounted and affixed to the vehicle according to this installation manual.
- * Personal safety during the installation process must be adhered to at all times.
- * Do not install this skid plate on vehicle models other than those allowed in this manual.
- * Estimated time for installation: 1 hour.

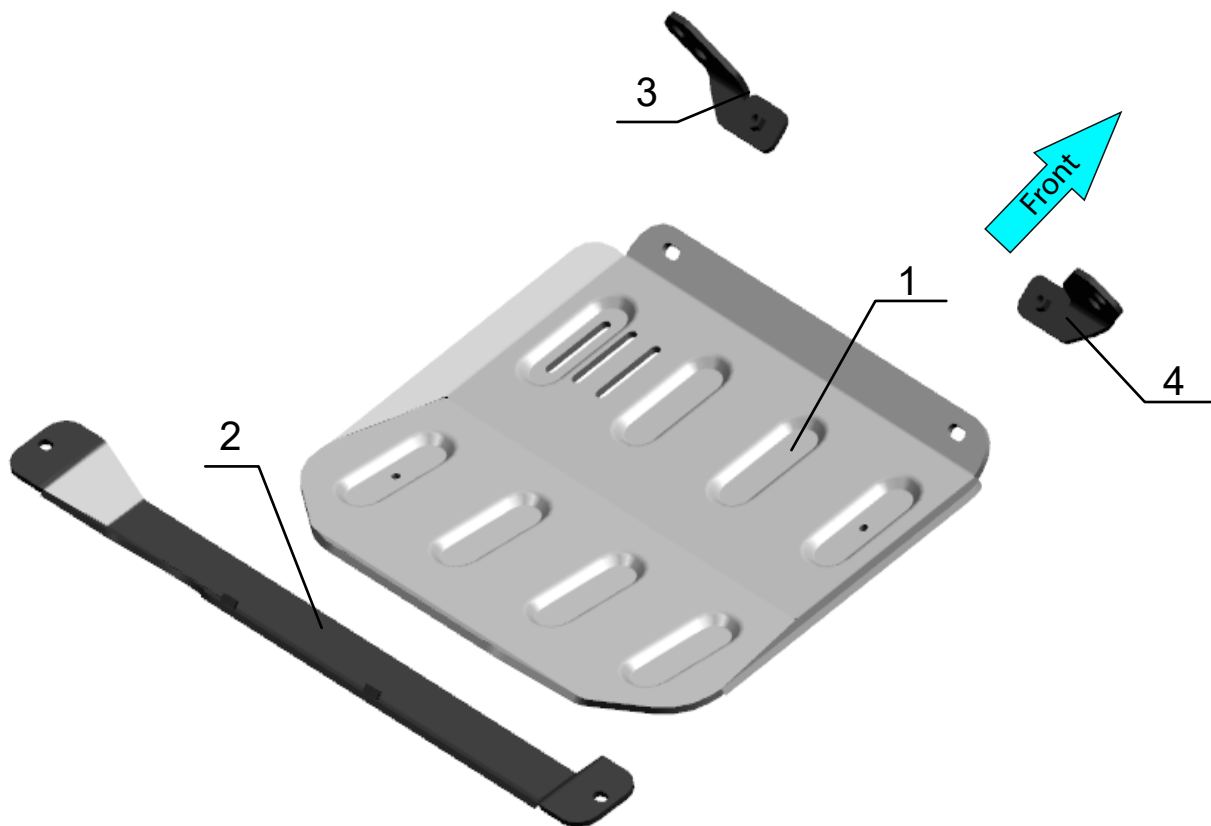
REQUIRED TOOLS

- * Basic tool kit
- * Torque wrench

TORQUE SETTING

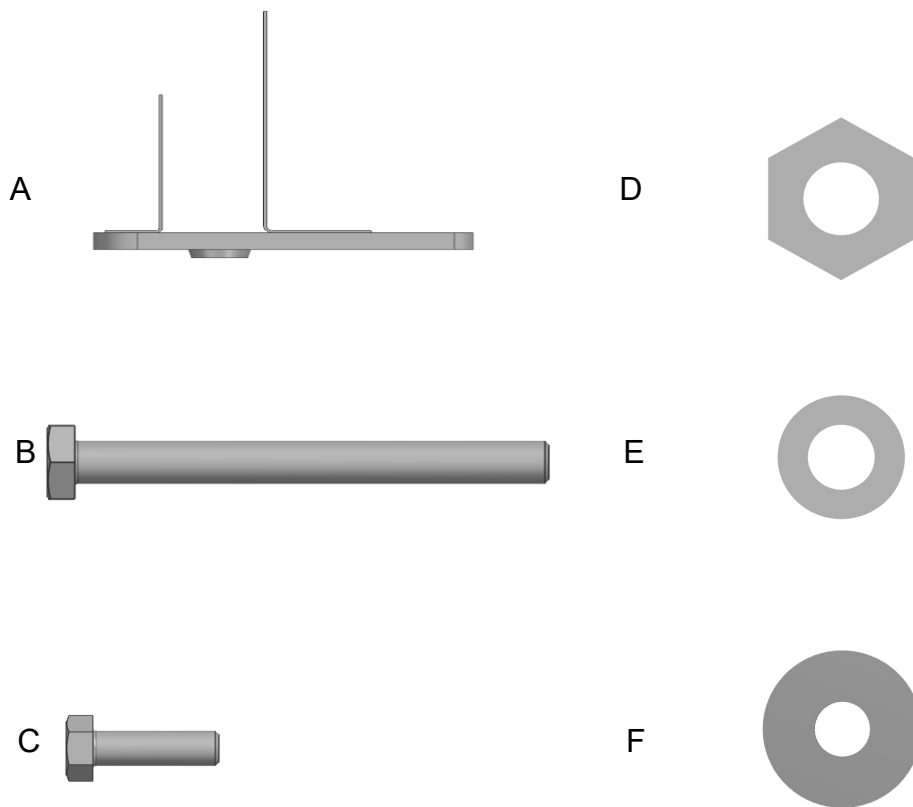
- * M8 - 24 H·m (17.7 lb/ft)
- * M10 - 47 H·m (34.7 lb/ft)

PARTS LISTING



- 1. Gearbox skid plate.....Qty 1
- 2. Rear mounting bracket.....Qty 1
- 3. Left bracket.....Qty 1
- 4. Right bracket.....Qty 1

PARTS LISTING



A. Insert nut M8.....	Qty 2
B. Bolt M10x100.....	Qty 4
C. Bolt 8x25.....	Qty 6
D. Nut M10.....	Qty 4
E. Washer 10.....	Qty 8
F. Washer 8.....	Qty 6

INSTALLATION PROCEDURE

***If equipped, remove any other aftermarket skid plate.**



Fig. 1

1. Unscrew the OE bolts from the right side.

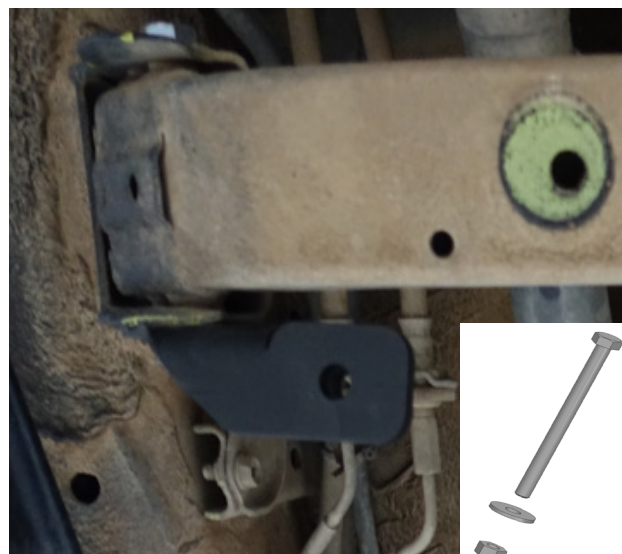


Fig. 2

2. Install the right bracket, using M10x100 bolts (item B), washers 10 (item E), nuts M10 (item D).

***Tighten hardware after that.**



Fig. 3

3. Unscrew the OE bolts on the left side.

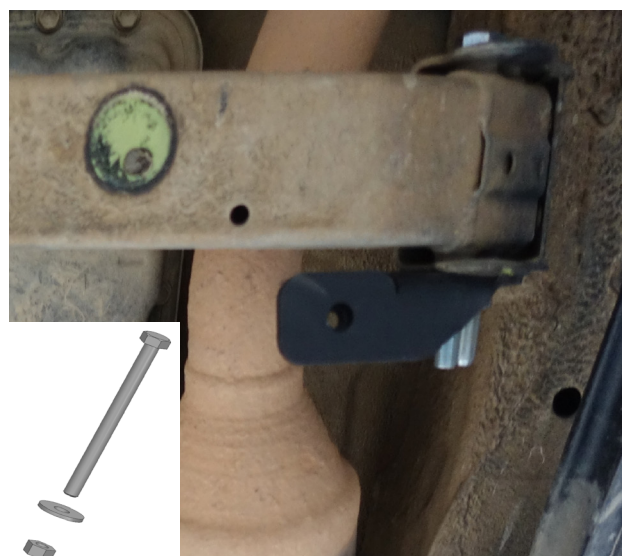


Fig. 4

4. Install the left bracket secure using M10x100 bolts (item B) 10 washers (item E) M10 nuts (item D).

***Tighten hardware after that.**

INSTALLATION PROCEDURE

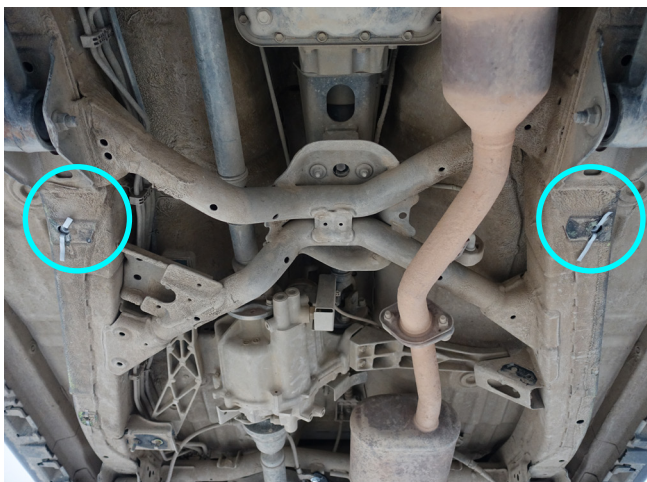


Fig. 5

5. Install insert nuts M8 (item A) in the OE frame holes as shown in fig.5.



Fig. 6

6. Install the rear mounting bracket using M8X25 bolts (item C) and washers (item F)
***Tighten hardware after that.**



Fig. 7

7. Install the skid plate using M8 bolts (item. C) and 8 washers (item. F) as shown in fig. 7.
***Tighten hardware after that.**

Before operating a vehicle fitted with RIVAL Skid Plate:

- make sure all fittings are tightened;
- ensure the integrity of the structure and its components.

INSTALLATION MANUAL

PRODUCT: TRANSER CASE SKID PLATE

APPLICATION: SUZUKI JIMNY (2018-Present)

PART NO: 2333.5526.2.6



CAUTION!

To reduce the risk of serious injury or damage to property: Before you start installing and using this product, read the full instructions, pay special attention to the conditions of safe use and recommendations for installation! When installing or maintaining this product, it is necessary to use protective goggles. Check the integrity of the structure and the moment the fastening is tightened every 250 miles (400 kms) of mileage. Do not use this product if there is damage to the structure or fasteners!

NOTICE

Skid plate is an additional protection, but it can not guarantee to protect against all possible damage in collisions. When driving, be careful of objects and terrain that may damage sensitive parts of the vehicle.

TRANSER CASE SKID PLATE

Part number 2333.5526.2.6

Suited to vehicle: Suzuki Jimny (2018-Present), V-1.5

Material: Aluminum



SAFETY NOTICE

- * The RIVAL skid plate is designed to complement the use and design of the specified vehicle under conditions specified by the vehicle manufacturer.
- * While driving the vehicle at any speed, collision with any other vehicle, animal or object must always be avoided.
- * Following any collision with any other vehicle, animal or object, the RIVAL skid plate and the vehicle must be inspected by a specialized or suitably qualified vehicle repairer for possible damage to the components and assemblies in order to confirm suitability for further use of the vehicle.
- * It is strongly recommended that you do not operate a vehicle with a damaged skid plate or its components. In the case of damage, please contact the nearest RIVAL dealer. Vehicle, or where the skid plate has been damaged, is extremely dangerous and must be avoided at all cost.

INSTALLATION NOTICE

- * The RIVAL skid plate must be mounted and affixed to the vehicle according to this installation manual.
- * Personal safety during the installation process must be adhered to at all times.
- * Do not install this skid plate on vehicle models other than those allowed in this manual.
- * Estimated time for installation: 1 hour.

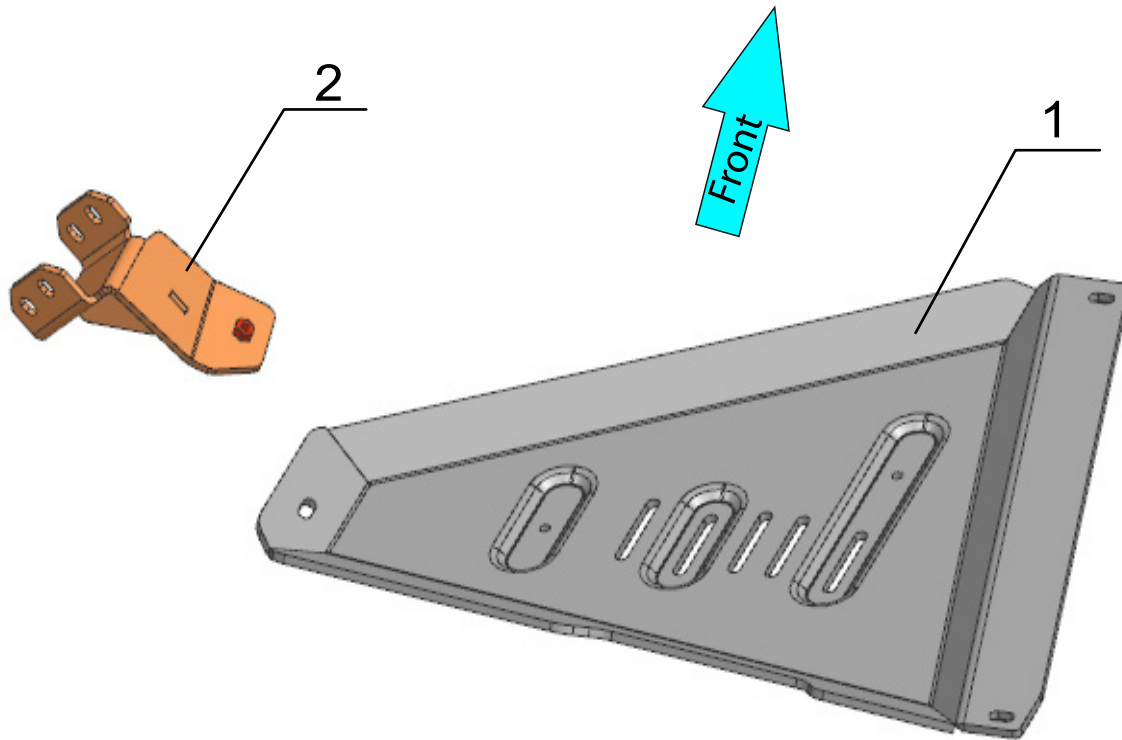
REQUIRED TOOLS

- * Basic tool kit
- * Torque wrench

TORQUE SETTING

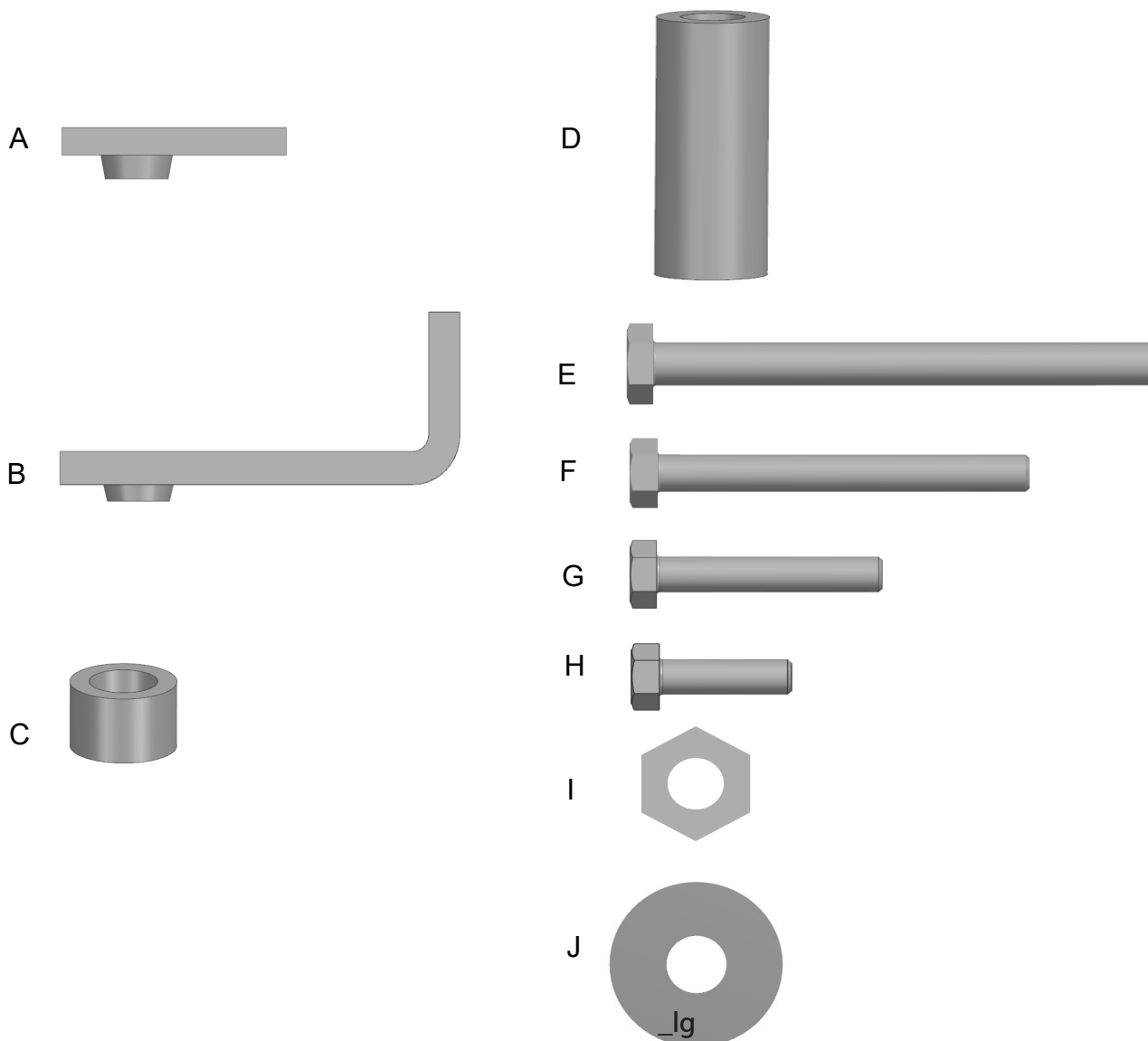
- * M8 - 24 H·m (17.7 lb/ft)

PARTS LISTING



- 1. Skid plate.....Qty 1
 - 2. Bracket.....Qty 1
- _lg

PARTS LISTING



A. Insert nut M8.....	Qty 1
B. Angular insert nut M8.....	Qty 1
C. Spacer 15MM.....	Qty 1
D. Spacer 50MM.....	Qty 1
E. Bolt M8x100.....	Qty 2
F. Bolt M8x70.....	Qty 1
G. Bolt M8x45.....	Qty 1
H. Bolt M8x25.....	Qty 1
I. Nut M8.....	Qty 2
J. Washer 8.....	Qty 7

INSTALLATION PROCEDURE

*If equipped, remove any other aftermarket skid plate.



Fig. 1

1. Install bracket in factory holes using bolt M8x100 (item E), nuts M8 (item I) and washers 8 (item J) as shown in fig. 1.

***Do not tighten yet**

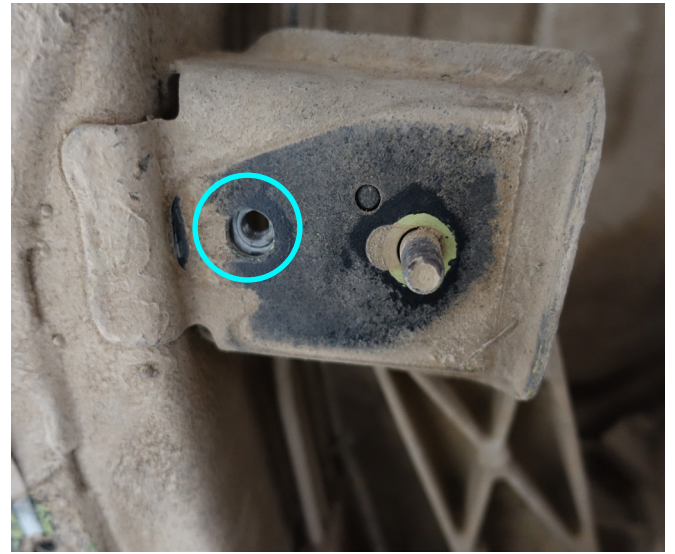


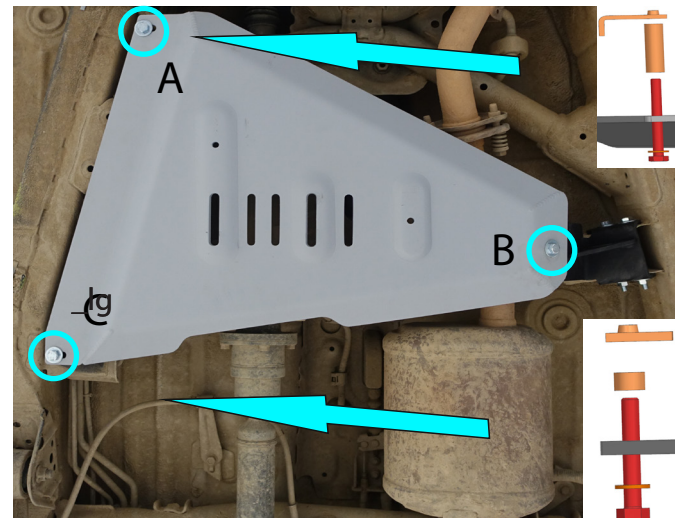
Fig. 2

2. Install insert nut (item A) in factory frame hole as shown in fig 2.



Fig. 3

3. Install angular insert nut (item B) in factory frame hole as shown in fig 3.



4. Fix the skid plate as shown in fig. 5 (item 1):
Mounting point C: using bolt M8x45, spacer 15 and washer 8 (items G, C, J).

Mounting point A: using bolt M8x70, washer 8 and spacer 50 (items F, J, D)

Mounting point B: Using bolt M8x25 and washer 8 (items H, J).

***Tighten hardware after that.**

INSTALLATION PROCEDURE



Before operating a vehicle fitted with RIVAL Skid Plate:

- make sure all fittings are tightened;
- ensure the integrity of the structure and its components.

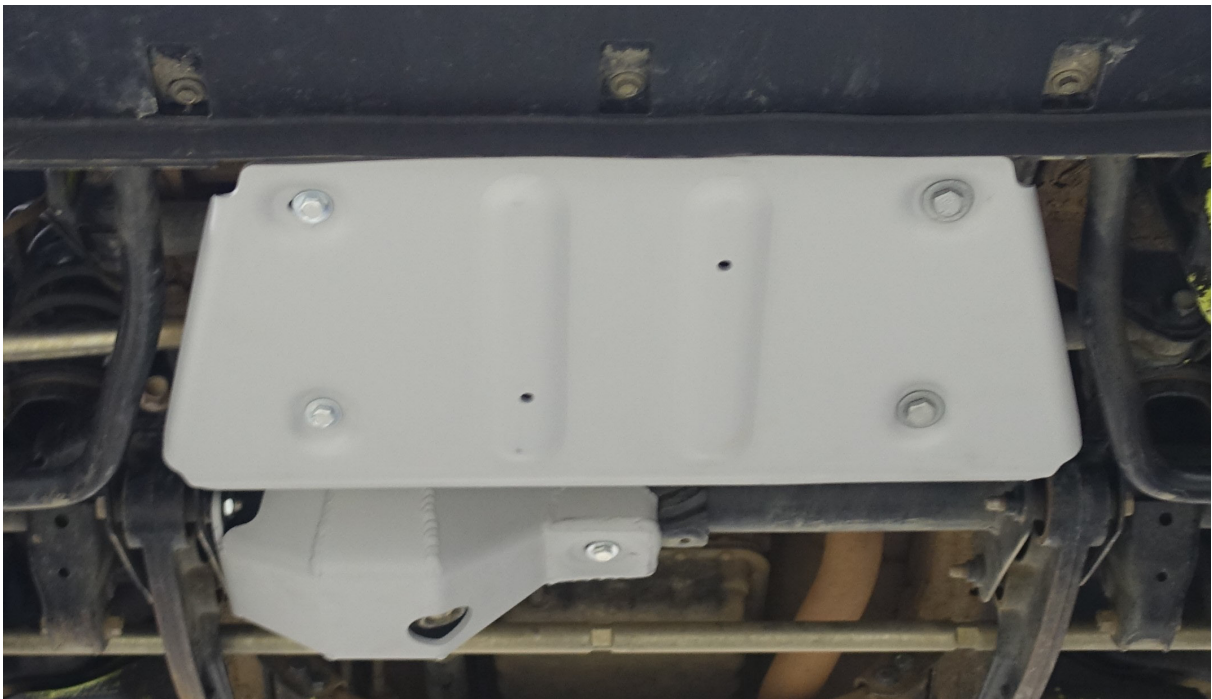
_lg

INSTALLATION MANUAL

PRODUCT: STEERING RODS SKID PLATE

APPLICATION: SUZUKI JIMNY (2018-Present)

PART NO: 2333.5527.2.6



CAUTION!

To reduce the risk of serious injury or damage to property: Before you start installing and using this product, read the full instructions, pay special attention to the conditions of safe use and recommendations for installation! When installing or maintaining this product, it is necessary to use protective goggles. Check the integrity of the structure and the moment the fastening is tightened every 250 miles (400 kms) of mileage. Do not use this product if there is damage to the structure or fasteners!

NOTICE

Skid plate is an additional protection, but it can not guarantee to protect against all possible damage in collisions. When driving, be careful of objects and terrain that may damage sensitive parts of the vehicle.

STEERING RODS SKID PLATE

Part number 2333.5527.2.6

Suited to vehicle: Suzuki Jimny (2018-Present), 1.5 AT 4WD

Material: Aluminum



SAFETY NOTICE

- * The RIVAL skid plate is designed to complement the use and design of the specified vehicle under conditions specified by the vehicle manufacturer.
- * While driving the vehicle at any speed, collision with any other vehicle, animal or object must always be avoided.
- * Following any collision with any other vehicle, animal or object, the RIVAL skid plate and the vehicle must be inspected by a specialized or suitably qualified vehicle repairer for possible damage to the components and assemblies in order to confirm suitability for further use of the vehicle.
- * It is strongly recommended that you do not operate a vehicle with a damaged skid plate or its components. In the case of damage, please contact the nearest RIVAL dealer. Vehicle, or where the skid plate has been damaged, is extremely dangerous and must be avoided at all cost.

INSTALLATION NOTICE

- * The RIVAL skid plate must be mounted and affixed to the vehicle according to this installation manual.
- * Personal safety during the installation process must be adhered to at all times.
- * Do not install this skid plate on vehicle models other than those allowed in this manual.
- * Estimated time for installation: 1 hour.

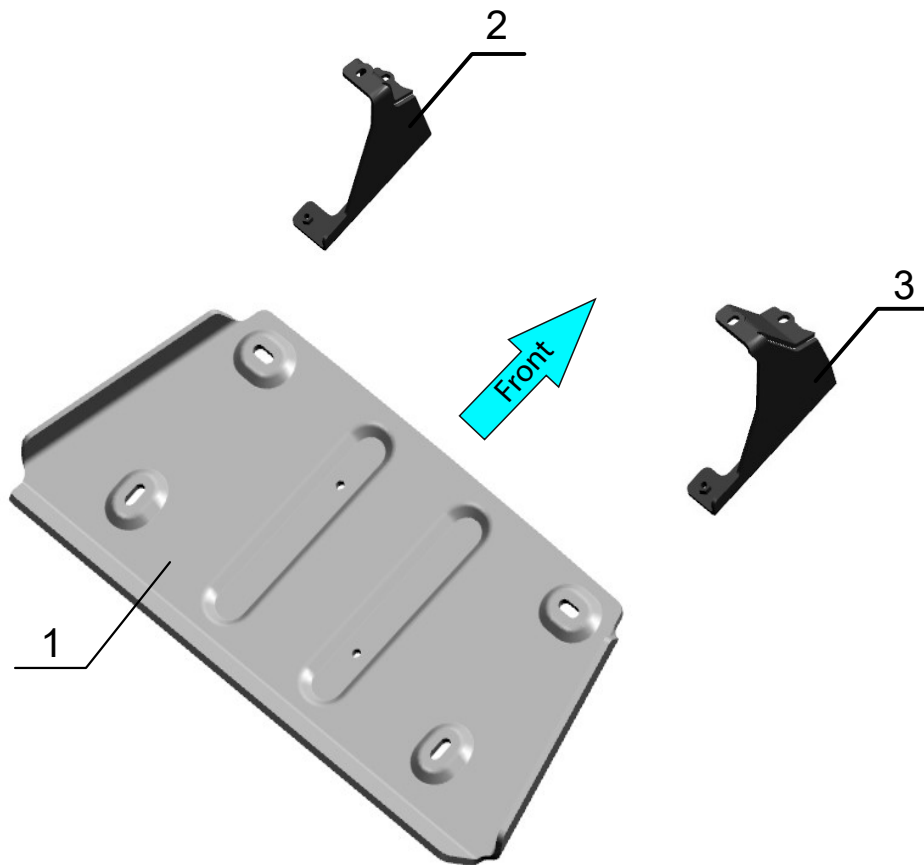
REQUIRED TOOLS

- * Basic tool kit
- * Torque wrench

TORQUE SETTING

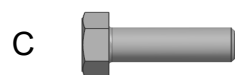
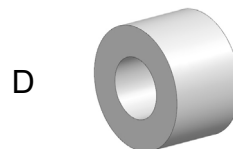
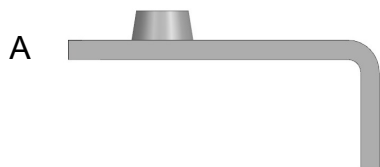
- * M8 - 24 H·m (17.7 lb/ft)

PARTS LISTING



- 1. Steering rods skid plate.....Qty 1
- 2. Left bracketQty 1
- 3. Right bracket.....Qty 1

PARTS LISTING



A. Insert nut M8.....	Qty 4
B. Bolt M8x60.....	Qty 4
C. Bolt M8x25.....	Qty 4
D. Spacer.....	Qty 2
E. Washer penny 8.....	Qty 8

INSTALLATION PROCEDURE

*If equipped, remove the factory skid plate or any other aftermarket skid plate.



Fig. 1

1. Install insert nuts M8 as shown in fig.1 (item A).

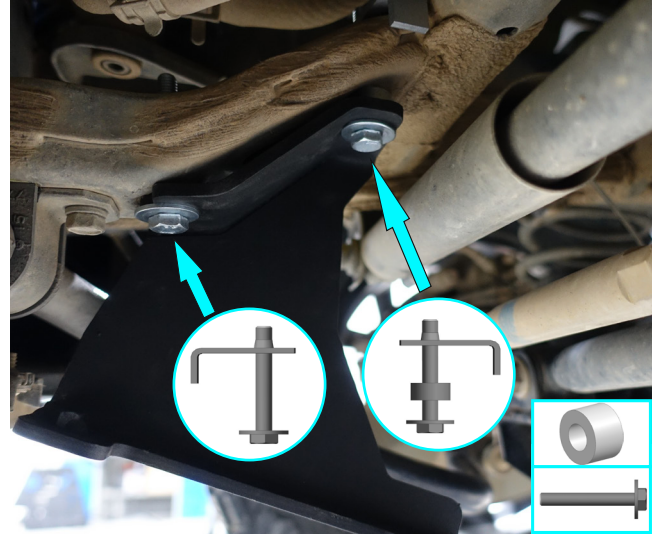


Fig. 2

2. Install left bracket as shown in fig.2 and fix it using bolts M8x60, washers penny 8 and spacer (items B, D, E).

***Tighten hardware after that.**



Fig. 3

3. Similarly install right bracket (item 3) and fix it (fig.3).

***Tighten hardware after that.**



Fig. 4

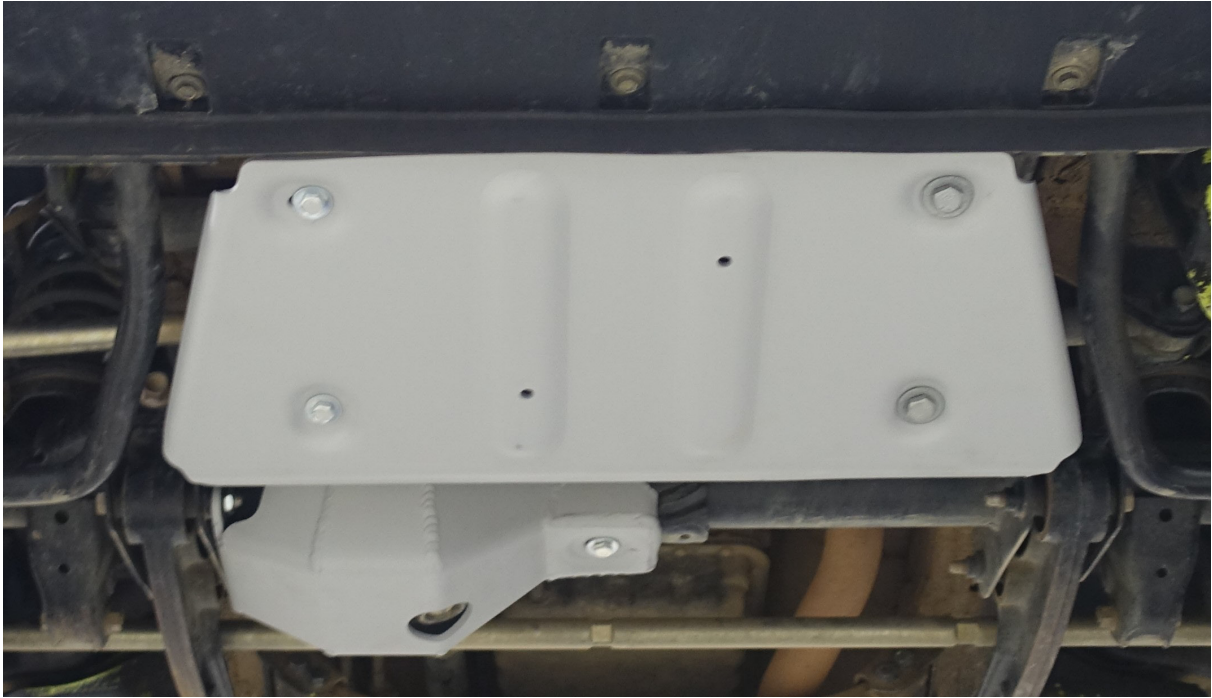
4. Install steering rods skid plate as shown in fig.4 and fix it using bolts M8x25, washers penny 8 (items C, E).

***Tighten hardware after that.**

INSTALLATION PROCEDURE

Before operating a vehicle fitted with RIVAL skid plate:

- make sure all fittings are tightened;
- ensure the integrity of the structure and its components.



INSTALLATION MANUAL

PRODUCT: FRONT DIFFERENTIAL SKID PLATE

APPLICATION: SUZUKI JIMNY (2018-PRESENT)

PART NO: 2333.5528.2.6



CAUTION!

To reduce the risk of serious injury or damage to property: Before you start installing and using this product, read the full instructions, pay special attention to the conditions of safe use and recommendations for installation! When installing or maintaining this product, it is necessary to use protective goggles. Check the integrity of the structure and the moment the fastening is tightened every 250 miles (400 kms) of mileage. Do not use this product if there is damage to the structure or fasteners!

NOTICE

Skid plate is an additional protection, but it can not guarantee to protect against all possible damage in collisions. When driving, be careful of objects and terrain that may damage sensitive parts of the vehicle.

DIFFERENTIAL SKID PLATE

Part number 2333.5528.2.6

Suited to vehicle: Suzuki Jimny (2018-Present), V-1.5

Material: Aluminum



SAFETY NOTICE

- * The RIVAL skid plate is designed to complement the use and design of the specified vehicle under conditions specified by the vehicle manufacturer.
- * While driving the vehicle at any speed, collision with any other vehicle, animal or object must always be avoided.
- * Following any collision with any other vehicle, animal or object, the RIVAL skid plate and the vehicle must be inspected by a specialized or suitably qualified vehicle repairer for possible damage to the components and assemblies in order to confirm suitability for further use of the vehicle.
- * It is strongly recommended that you do not operate a vehicle with a damaged skid plate or its components. In the case of damage, please contact the nearest RIVAL dealer. Vehicle, or where the skid plate has been damaged, is extremely dangerous and must be avoided at all cost.

INSTALLATION NOTICE

- * The RIVAL skid plate must be mounted and affixed to the vehicle according to this installation manual.
- * Personal safety during the installation process must be adhered to at all times.
- * Do not install this skid plate on vehicle models other than those allowed in this manual.
- * Estimated time for installation: 1 hour.

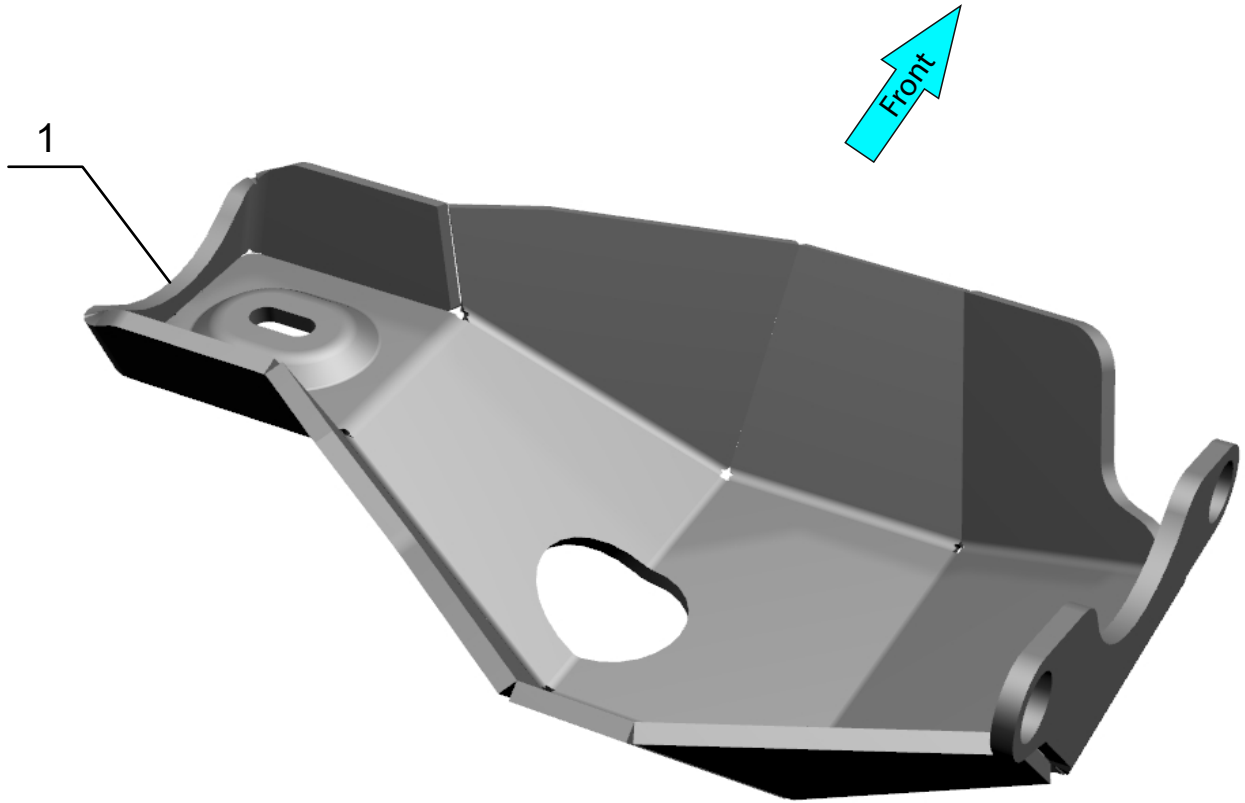
REQUIRED TOOLS

- * Basic tool kit
- * Torque wrench

TORQUE SETTING

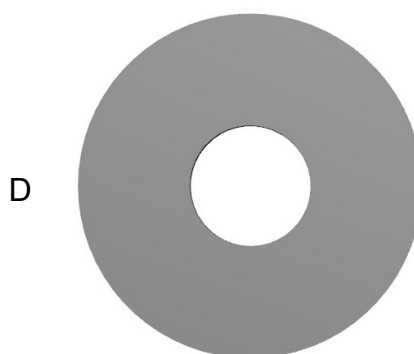
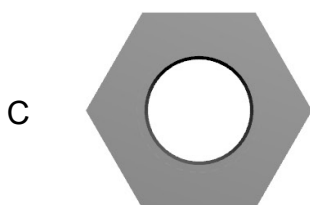
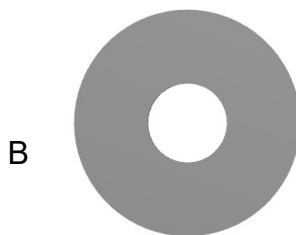
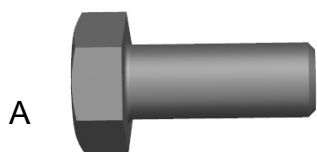
- * M8 - 24 N·m (17.7 lb/ft)
- * M12 - 77 N·m (56.8 lb/ft)

PARTS LISTING



1. Skid plate.....Qty 1

PARTS LISTING



- A. Bolt M8x20.....Qty 1
- B. Washer 8.....Qty 1
- C. Nut M12x1.25.....Qty 2
- D. Washer 12.....Qty 2
- E. Insert nut M8.....Qty 1

INSTALLATION PROCEDURE

*If equipped, remove any other aftermarket skid plate.

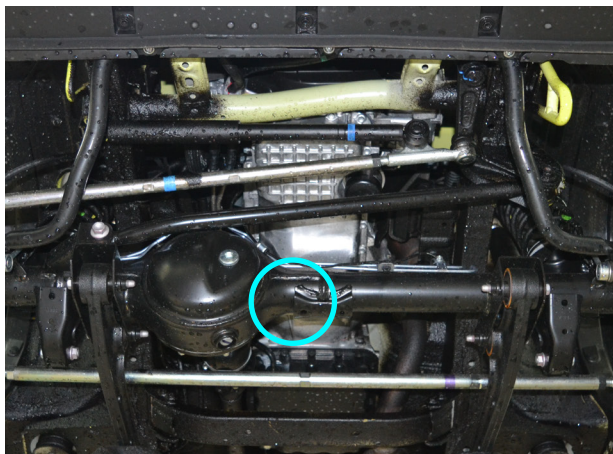


Fig. 1

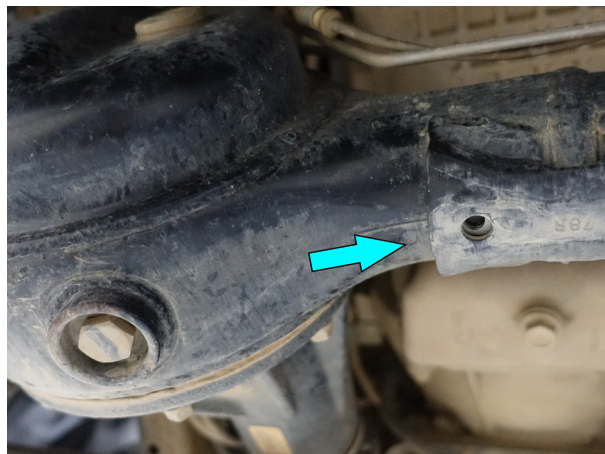


Fig. 2

1. Install insert nut M8 (item E), as shown in fig. 2.

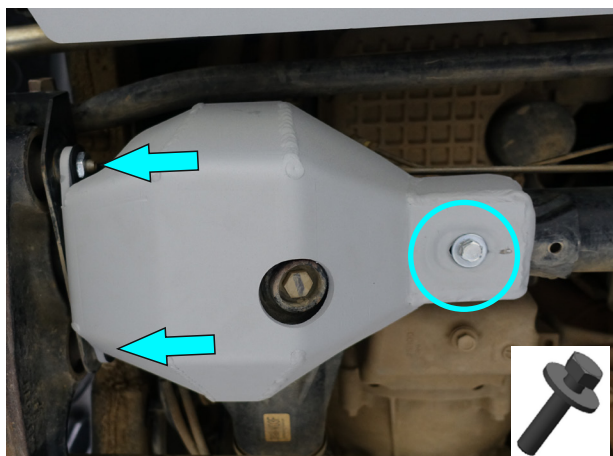


Fig. 3

2. Put skid plate (item 1) on OE bolts M12 and fix it to insert nut using bolt M8x20 with washer 8 (item A, B) (fig. 3).
***Do not tighten yet.**



Fig. 4

3. Fix skid plate using nuts M12x1,25 with washers 12 (item C, D) (fig. 4).
***Tighten hardware after that.**

INSTALLATION PROCEDURE

Before operating a vehicle fitted with RIVAL Skid Plate:

- make sure all fittings are tightened;
- ensure the integrity of the structure and its components.

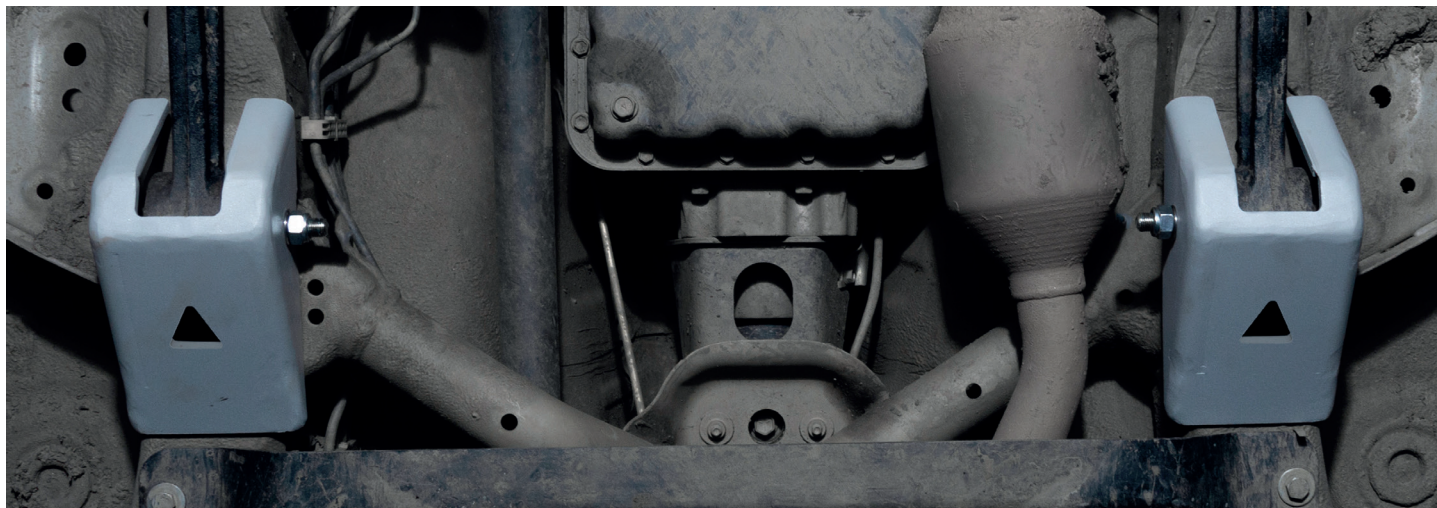


INSTALLATION MANUAL

PRODUCT: RADIUS ARM SKID PLATE

APPLICATION: SUZUKI JIMNY (2018-PRESENT)

PART NO: 2333.5529.1.6



CAUTION!

To reduce the risk of serious injury or damage to property: Before you start installing and using this product, read the full instructions, pay special attention to the conditions of safe use and recommendations for installation! When installing or maintaining this product, it is necessary to use protective goggles. Check the integrity of the structure and the moment the fastening is tightened every 250 miles (400 kms) of mileage. Do not use this product if there is damage to the structure or fasteners!

NOTICE

Skid plate is an additional protection, but it can not guarantee to protect against all possible damage in collisions. When driving, be careful of objects and terrain that may damage sensitive parts of the vehicle.

RADIUS ARM SKID PLATE

Part number 2333.5529.1.6

Suited to vehicle: Suzuki Jimny V-1.5, (2018-Present)

Material: Aluminum



SAFETY NOTICE

- * The RIVAL skid plate is designed to complement the use and design of the specified vehicle under conditions specified by the vehicle manufacturer.
- * While driving the vehicle at any speed, collision with any other vehicle, animal or object must always be avoided.
- * Following any collision with any other vehicle, animal or object, the RIVAL skid plate and the vehicle must be inspected by a specialized or suitably qualified vehicle repairer for possible damage to the components and assemblies in order to confirm suitability for further use of the vehicle.
- * It is strongly recommended that you do not operate a vehicle with a damaged skid plate or its components. In the case of damage, please contact the nearest RIVAL dealer. Vehicle, or where the skid plate has been damaged, is extremely dangerous and must be avoided at all cost.

INSTALLATION NOTICE

- * The RIVAL skid plate must be mounted and affixed to the vehicle according to this installation manual.
- * Personal safety during the installation process must be adhered to at all times.
- * Do not install this skid plate on vehicle models other than those allowed in this manual.
- * Estimated time for installation: 1 hour.

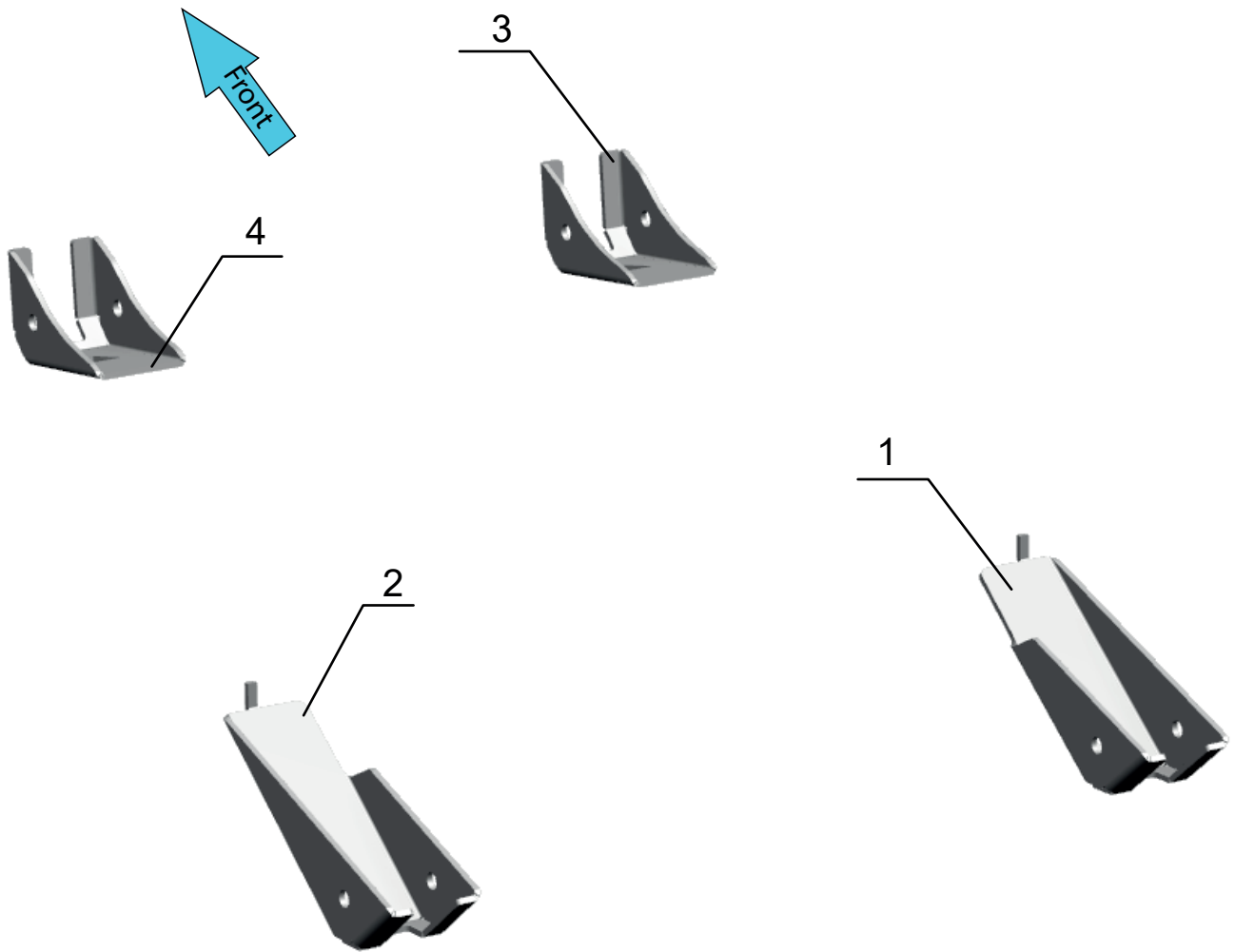
REQUIRED TOOLS

- * Basic tool kit
- * Torque wrench

TORQUE SETTING

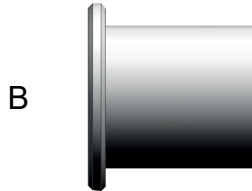
- * M12 - 86.9 H·m (64.1 lb/ft)

PARTS LISTING



- 1. Rear radius arm skid plate (right).....Qty 1
- 2. Rear radius arm skid plate (left).....Qty 1
- 3. Front radius arm skid plate (right).....Qty 1
- 4. Front radius arm skid plate (left).....Qty 1

PARTS LISTING



A. Bolt M12x130.....	Qty 4
B. Spacer.....	Qty 8
C. Nut M12.....	Qty 4

INSTALLATION PROCEDURE

***A vehicle must be lifted before installation the radius arm skid plate.**

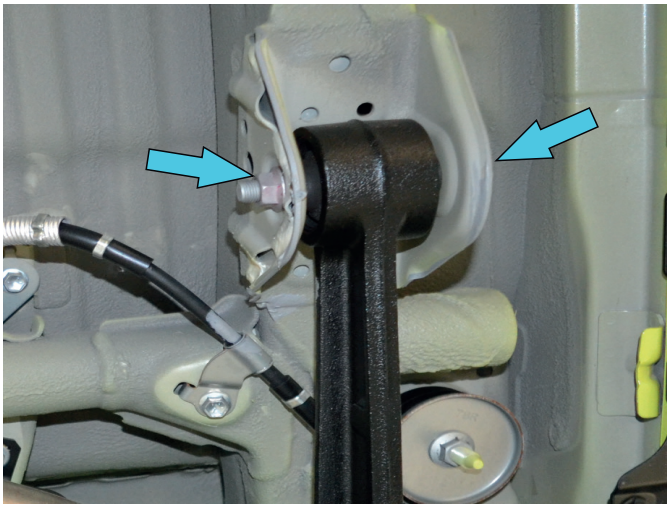


Fig. 1

1. Remove the factory bolt of the rear left radius arm (Fig. 1).

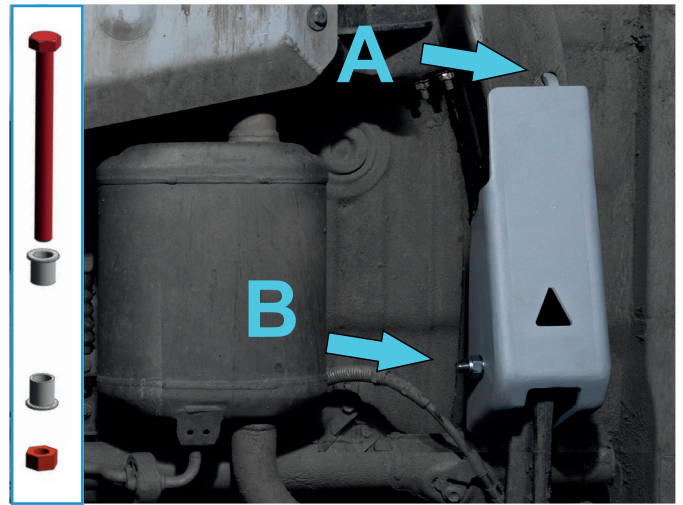


Fig. 2

2. **A** - slide the rear arm radius skid plate (left) (item 2) to the hole;
B - fix it using bolt M12x130, nut M12 and spacers (items A,B,C) as shown in fig. 2.
***Do not tighten yet.**

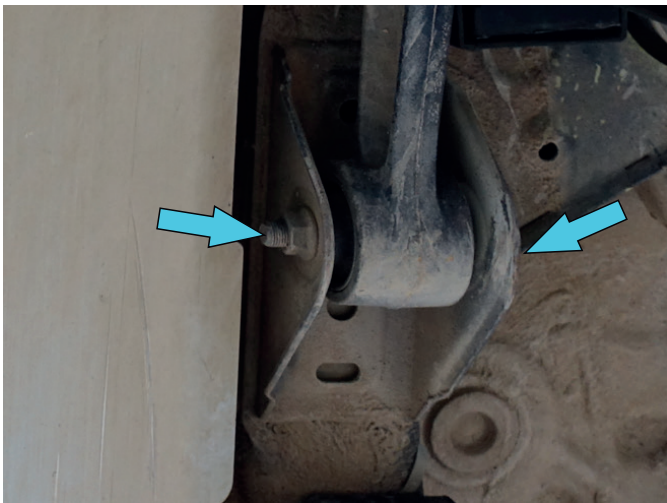


Fig. 3

3. Remove the factory bolt of the front left radius arm (Fig. 3).

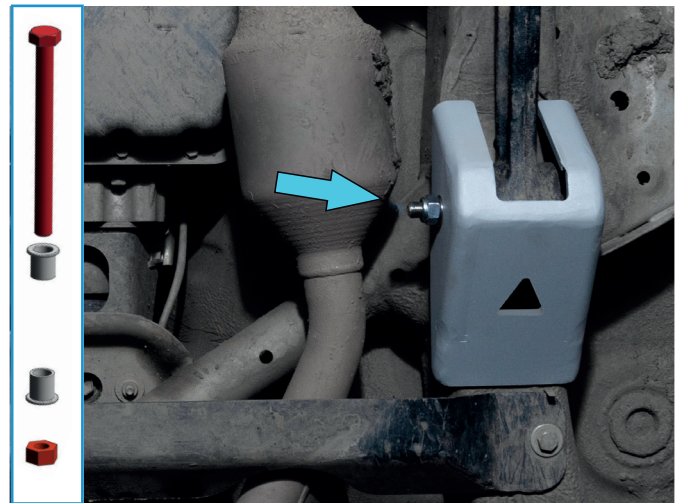


Fig. 4

4. Install the front radius arm skid plate (left) (item 4) on the radius arm and fix it using bolt M12x130, nut M12 and spacers (items A,B,C) as shown in fig. 4.
***Do not tighten yet.**

INSTALLATION PROCEDURE



Fig. 5

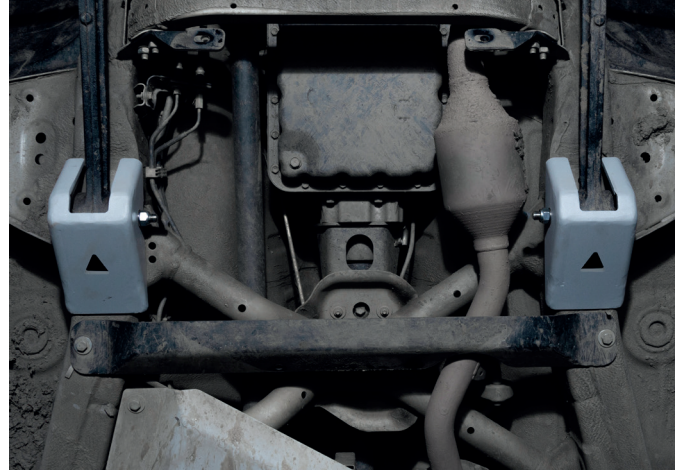


Fig. 6

5. Repeat steps 1-4 for right side of vehicle (fig.5,6).

6. Lower the vehicle to the ground.
***Tighten hardware after that.**

INSTALLATION PROCEDURE

Before operating a vehicle fitted with RIVAL Skid Plate:

- make sure all fittings are tightened;
- ensure the integrity of the structure and its components.

