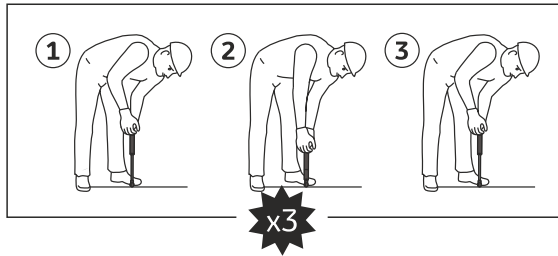
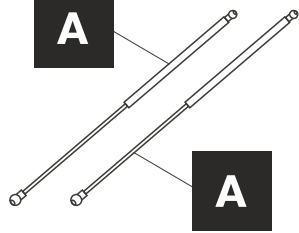
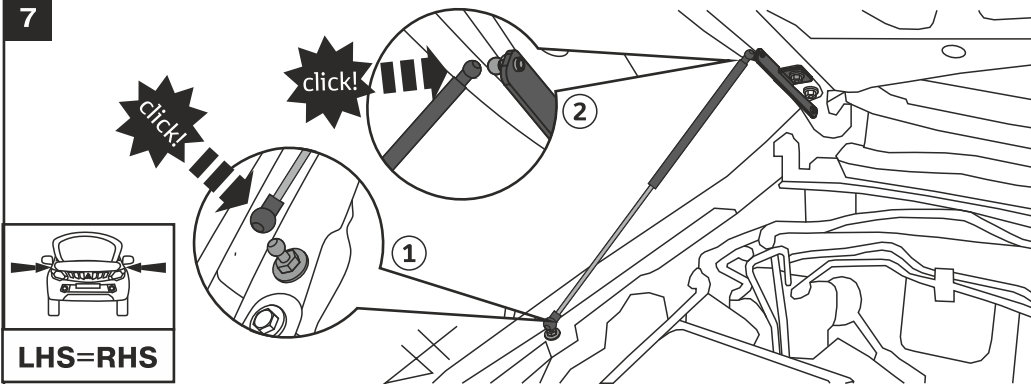


6



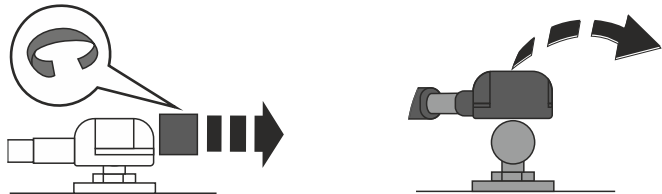
7



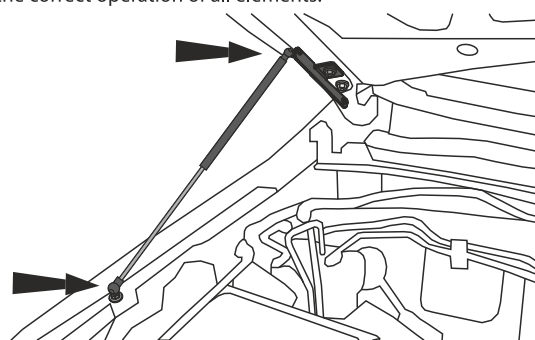
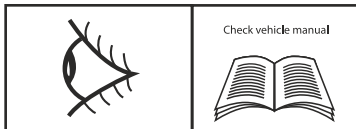
LHS=RHS



Attention! If it's needed to remove installed gas strut, disassemble how shown on the picture. Operate with the hood being totally open.



Attention! After installation, check the correct operation of all elements.



Mitsubishi L200 / Pajero Sport

HOOD GAS STRUTS

Installation instructions

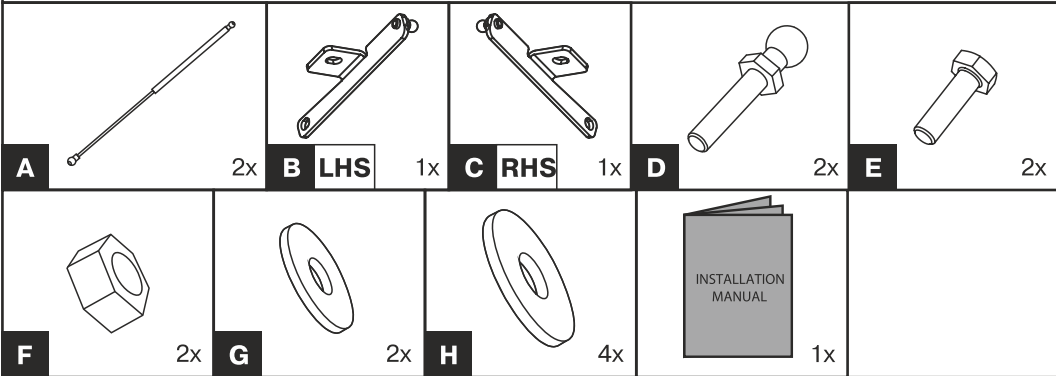


Model year:	2015-/2016-
Stock No.:	2A.ST.4007.1
Compatibility:	all types
⚖ Weight:	1 kg
🕒 Installation time:	30 min

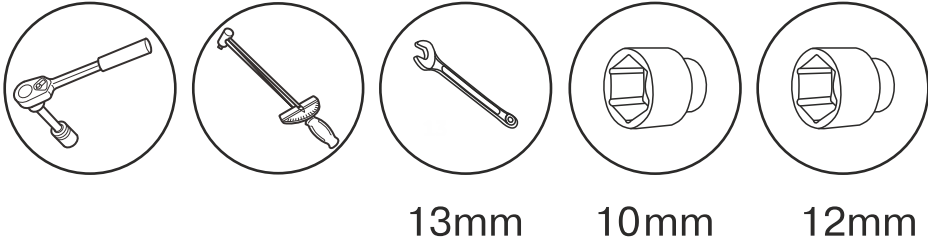
Issue # 1 from 22.07.2016



2A.ST.4007.1



Required tools



! Attention!

Before installation of gas struts, open the hood and check that there is no additional equipment installed in engine bay which can block installation.

