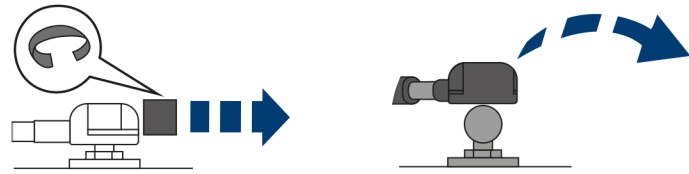


! Attention! If it's needed to remove installed gas strut, disassemble how shown on the picture. Operate with the hood being totally open.



Check vehicle manual

After installation, check the correct operation of all elements.

TOYOTA Hilux HOOD GAS STRUTS Installation Instructions



Model year: 2015-2018; 2018-

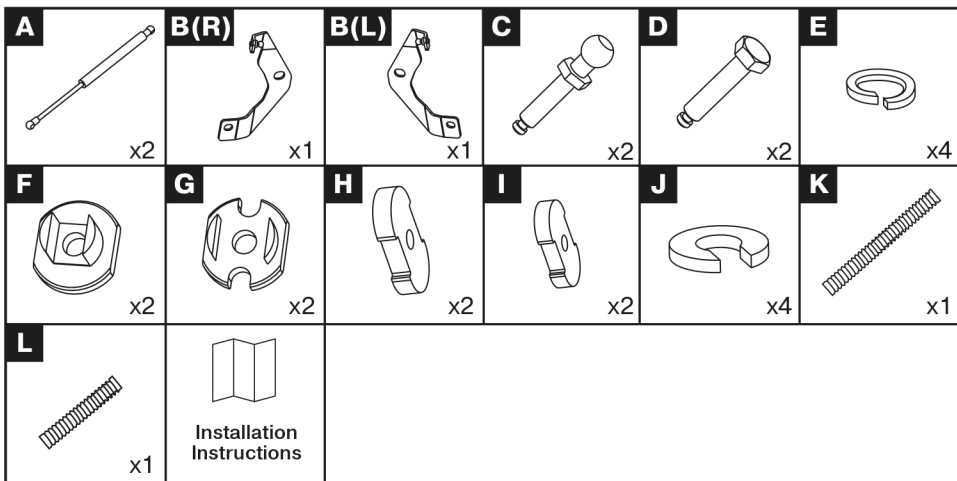
Part No.: 2A.ST.5708.1

Compatibility: all types

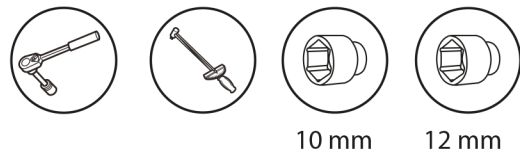
Weight: 1 kg

Installation time: 30 min





Required Tools:



! Attention!

Before installation of gas struts, open the hood and check that there is no additional equipment installed in engine bay which can block installation.

