

INSTALLATION MANUAL

PRODUCT: RECOVERY POINTS
MODEL: ISUZU D-MAX (2017-)
PART NO: 2D.9103.1



WARNING!

In order to reduce the risk of severe injury or property damage: Before installation and use of this product read the whole procedure, paying special attention to the safety notice and installation notice! Upon installation or maintenance of this product it is necessary to use protective glasses. Check integrity of the design and torque settings of fasteners in each 1000km of the vehicle usage. Do not use this product if there is any damage to the design or fasteners

RECOVERY POINTS

Item: 2D.9103.1
Make: Isuzu
Model: D-Max
Year of manufacture: 2017-
Material: Steel
Dimensions: 270x255x105 mm
Weight: 8,5 kg

Compatibility: RIVAL 2L.9101.1 Winch Bracket



SAFETY NOTICE

- * The RIVAL recovery points are designed to compliment the use and design of the specified vehicle under conditions specified by the car manufacturer.
- * While driving the vehicle at any speed, collision with any other vehicle, animal or object must always be avoided.
- * The operation of a vehicle where the recovery points are not properly attached and fastened to the vehicle, or where it has been damaged, must be avoided at all cost.
- * It is recommended that you carry out regular inspections of all fittings
- * It is not allowed to load recovery point with force of more than that specified herein.

INSTALLATION NOTICE

- * The recovery points should be mounted in strict compliance with this procedure in specialized service centers.
- * During installation it is required to use personal protective equipment.
- * Do not install this recovery points onto the vehicle models other than those specified herein.

REQUIRED TOOLS

- * Basic tool kit
- * Torque wrench
- * Angle grinder
- * Marker
- * Scotch tape
- * Masking tape
- * Scissors
- * Knife

TORQUE SETTINGS

- * M6 - 9 Nm
- * M10 - 44 Nm
- * M12 - 80 Nm

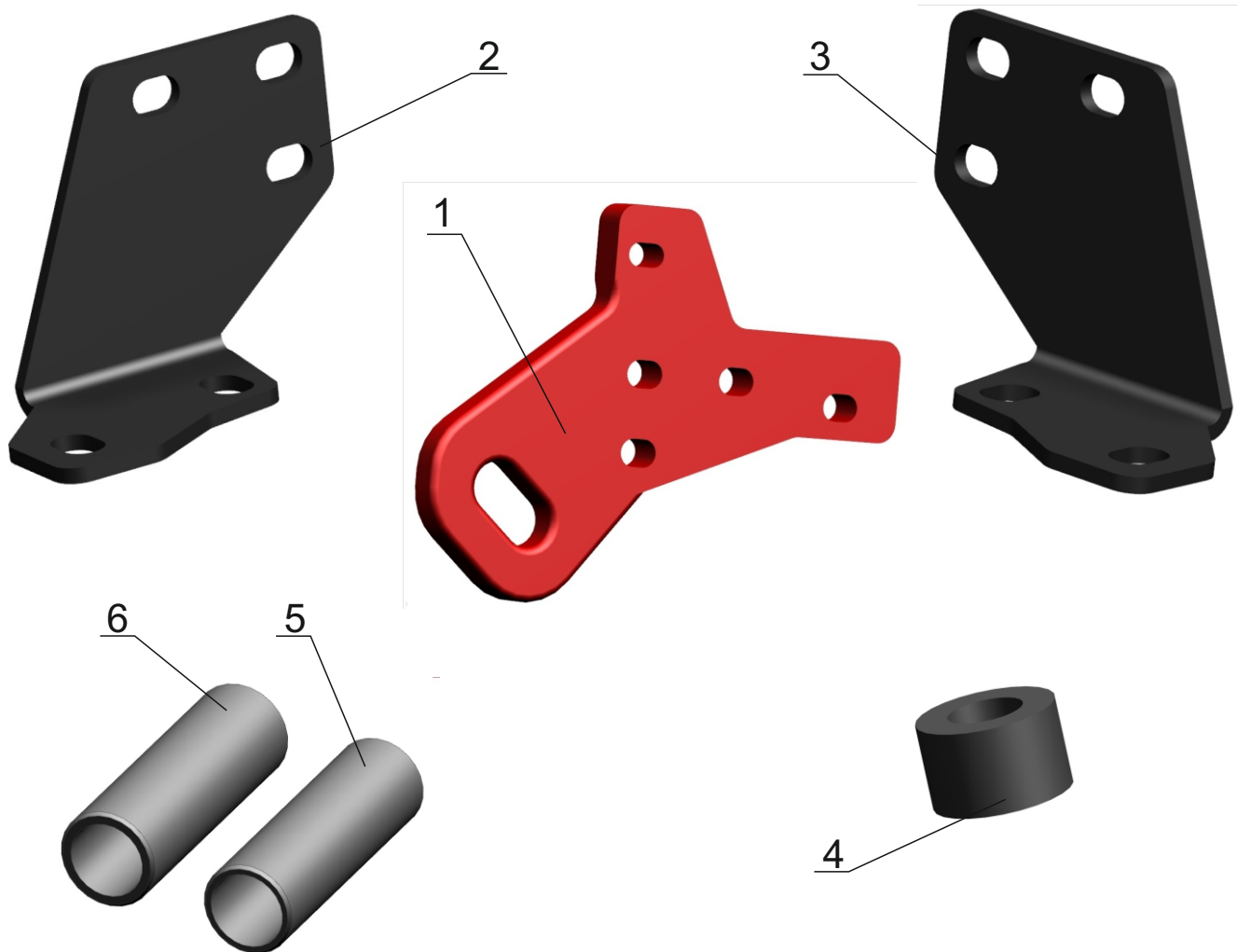
Vehicle fitted with a RIVAL recovery points have the following advantages:

- Access to each recovery point, in case if parallel recovery point blocked.
- Possibility to choose the side to hitch the tow, depending on the side of recovery point on the towing vehicle.
- Possibility to to instal shackle using clevis side, not the bolt, that significantly reduce shackle's bolt load, in case of lateral effort.

Recovery points maximum pulling capacity is 5000 kg.

PARTS LISTING

1. Recovery point.....	2 pc
2. Left bracket.....	1 pc
3. Right bracket.....	1 pc
4. Bushing.....	2 pc
5. Small end bushing.....	2 pc
6. Large end bushing.....	2 pc
7. Bolt 10x45.....	2 pc
8. Bolt 10x50.....	2 pc
9. Bolt 10x100.....	2 pc
10. Bolt 12x1,25x70.....	6 pc
11. Bolt 12x110.....	2 pc
12. Adjusting washer M10	8 pc
13. Adjusting washer M12	2 pc
14. Washer M12.....	14 pc
15. Nut M10.....	2 pc
16. Nut M12.....	2 pc
17. Nut M12x1,25.....	6 pc



INSTALLATION PROCEDURE



1. Open the bonnet.
2. Disconnect the negative battery terminal cable.

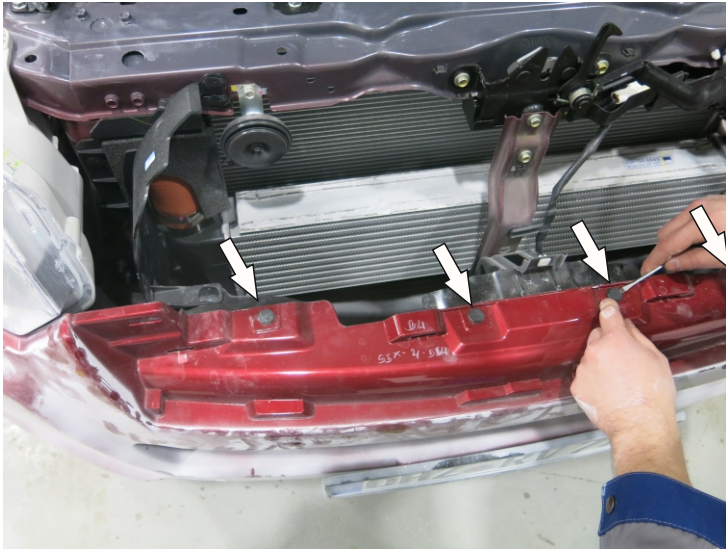


3. Remove 4 screws as shown.
*** Set aside for re-use later.**



4. Remove radiator grill fittings (6 pc) as shown.
Carefully dismantle the radiator grille.
*** Set aside for re-use later.**

INSTALLATION PROCEDURE



5. Remove plastic plugs out of the bumper (4 pc) as shown

Set aside for re-use later.



6. Unscrew 1 screw in wheel arches on the vehicle's left and right side.

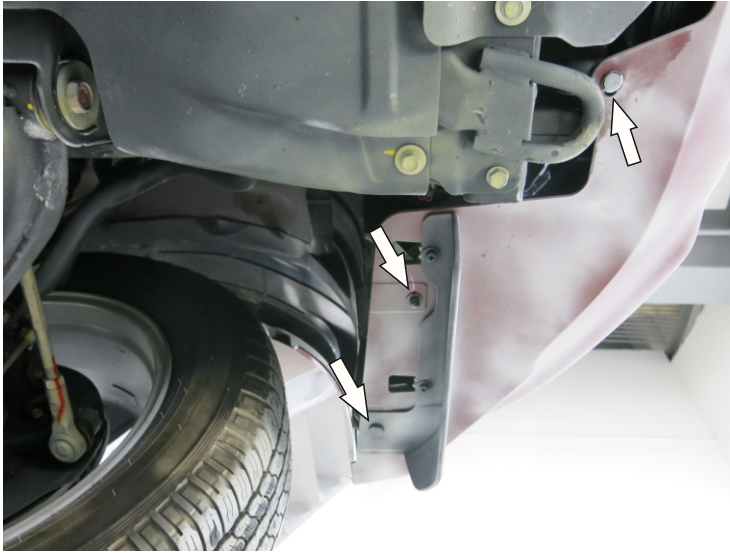
Set aside for re-use later.



7. Remove 1 plug in wheel arches on the left and right, as shown.

Set aside for re-use later.

INSTALLATION PROCEDURE

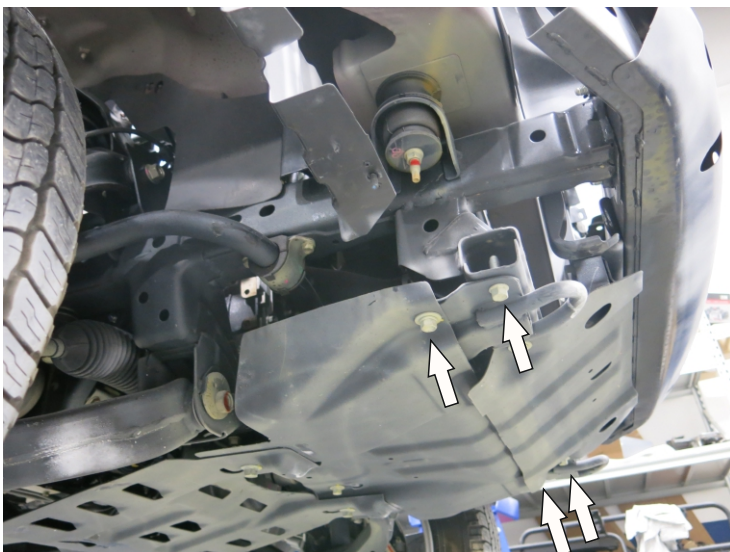


8. Remove 4 plugs in the lower part of bumper, and using torque wrench unscrew 2 nuts, as shown.

Set aside for re-use later.



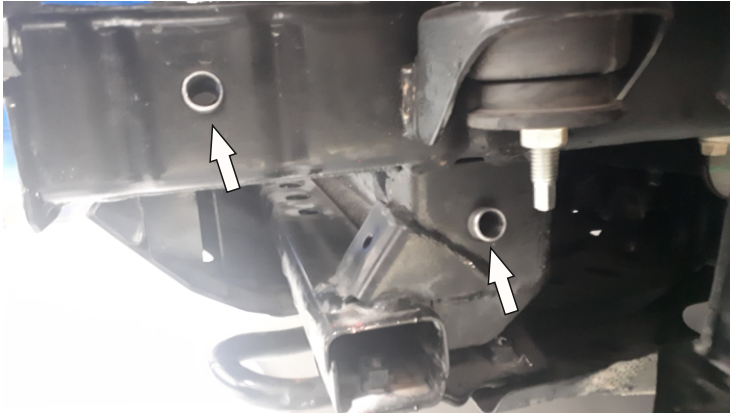
9. Carefully dismantle the bumper. Pull the bumper edge by unlatching the latches, moving from the bumper edge to the center. Disconnect fog lights and parking sensors.



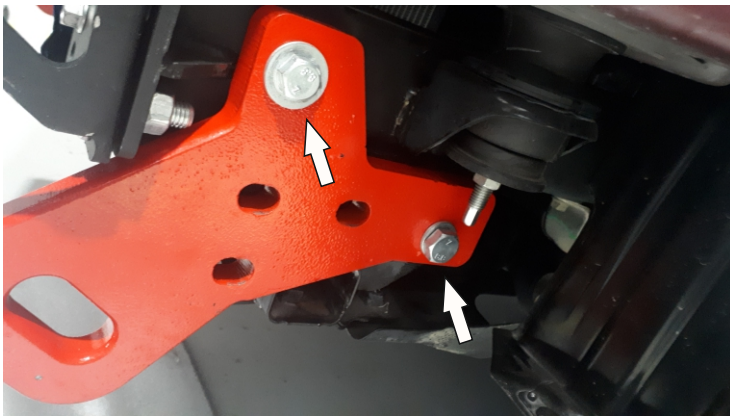
10. Unscrew 4 bolts, as shown.

Set aside for re-use later.

INSTALLATION PROCEDURE

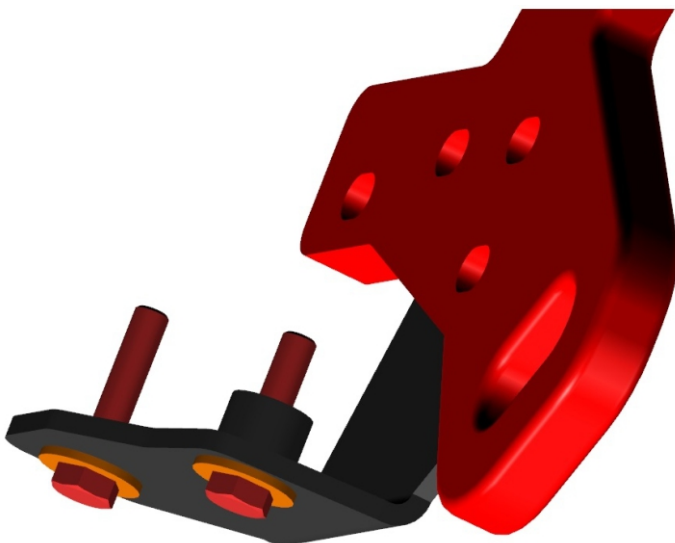


11. Place bushings (pos. 5,6) into the chassis as shown, on the vehicles left and right sides.



12. Instal recovery points (pos.1) on the face side of chassis, using bolts M10x100 and M12x110, adjusting washers M10, adjusting washers M12, washers M12 and M10 and M12 nuts.

*** Do not tighten yet.**



13. Instal left bracket (pos. 2) on left recovery point, using bolts M10x45 and M10x50, adjustment washers M10 and bushing (pos.4).

*** Do not tighten yet.**

Use right bracket (pos.3) for right recovery point.

INSTALLATION PROCEDURE



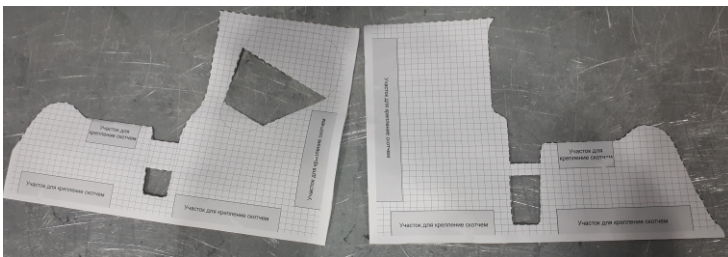
14. Fix the brackets with recovery points, using bolts M12x60, washers M12 and nuts M12.

*** Tighten all screw joints.**

15. Use templates, attached in the end of this manual, to cut the holes, for recovery points, in the bumper. Cut template following dashed line for left recovery point (attachment 1), remove area #1 and #2, as shown.

Make the same actions for right recovery point using template (attachment 2), remove area #1 and #2.

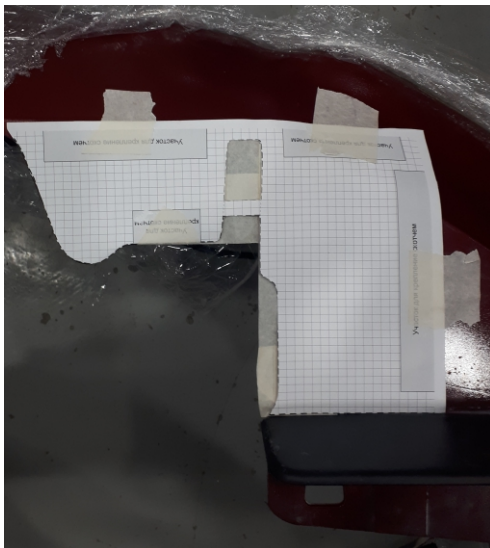
*** *Stick the template over for more hardness, using scotch tape.***



INSTALLATION PROCEDURE

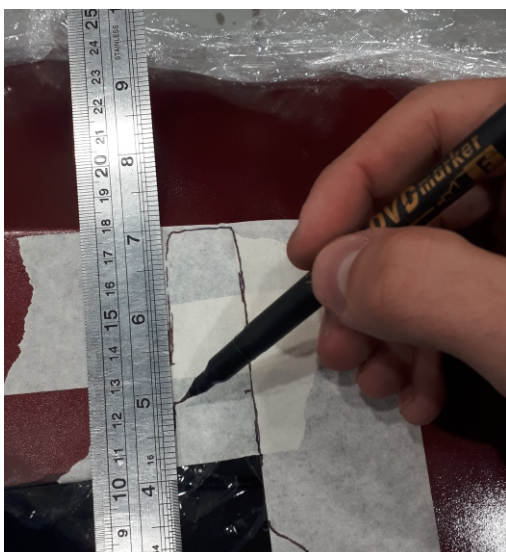


16. Stick masking tape on the bumper, as shown.



17. Place template for left recovery point on the bumper. Adjust it on the bumper following cutout and fix it using masking tape, as shown.

Mark cut line, using template.

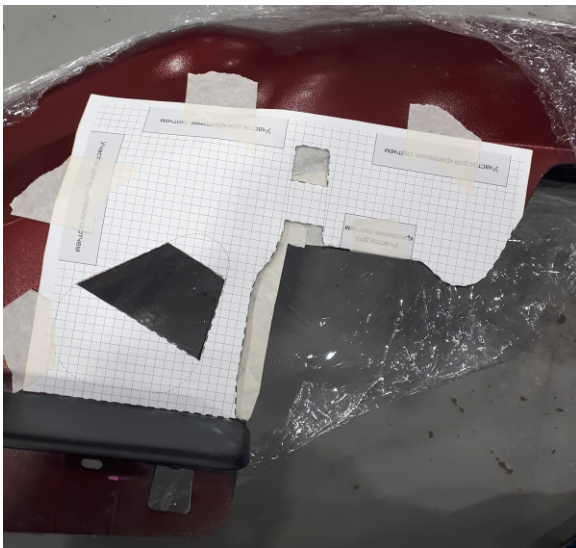


18. Connect the cut lines as template shown (red dash lines).

INSTALLATION PROCEDURE

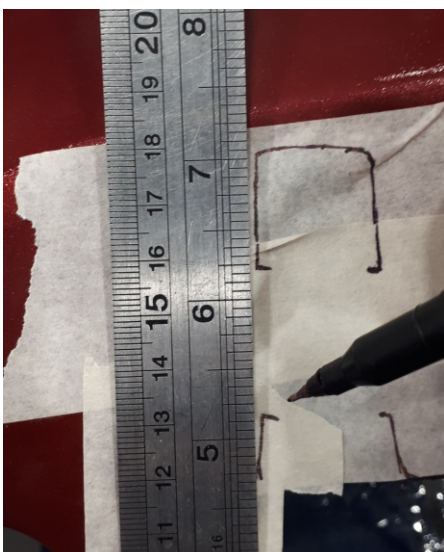


19. Stick masking tape on the bumper, as shown.



20. Place template for right recovery point on the bumper. Adjust it on the bumper following cutout and fix it using masking tape, as shown.

Mark cut line, using template.



21. Connect the cut lines as template shown (red dash lines).

INSTALLATION PROCEDURE



22. Make sure, that wires do not handicap to cut the bumper. Carefully cut out marked area, using angle grinder.

*** Polish burrs and sharp edges.**



23. Install bumper and radiator grille onto the vehicle.

INSTALLATION PROCEDURE

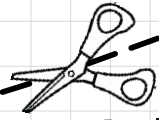
Before operating a vehicle fitted with a RIVAL recovery points:

- make sure that all screw joints are tightened;
- check integrity of all recovery points components.



Attachment 1
LEFT RECOVERY POINT
TEMPLATE
COPY

1



LEFT RECOVERY POINT

as viewed in the direction of vehicle motion

Masking tape sticking area

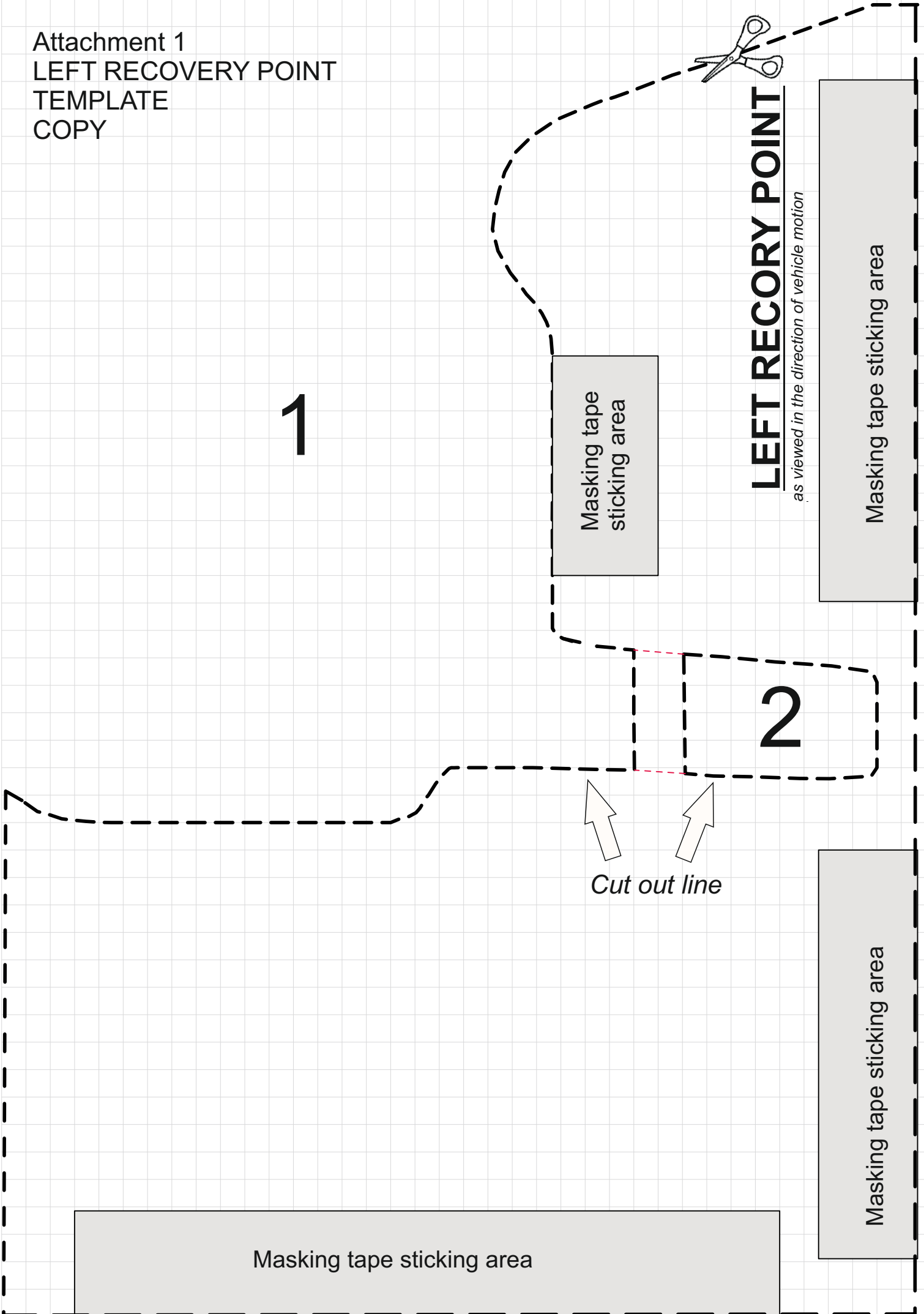
Masking tape sticking area

2

Cut out line

Masking tape sticking area

Masking tape sticking area



Attachment 1
RIGHT RECOVERY
POINT TEMPLATE



RIGHT RECOVERY POINT

as viewed in the direction of vehicle motion

1

Masking tape sticking area

Masking tape sticking area

2

Cut out line



3

Cut out line



Masking tape sticking area

Masking tape sticking area

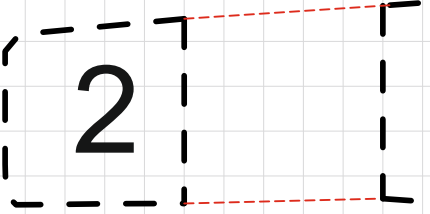
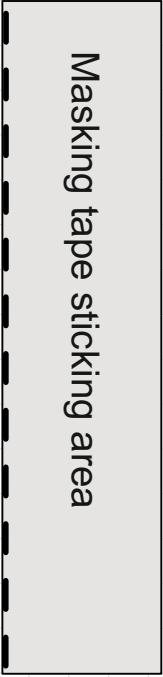
Masking tape sticking area



RIGHT RECOVERY POINT

as viewed in the direction of vehicle motion

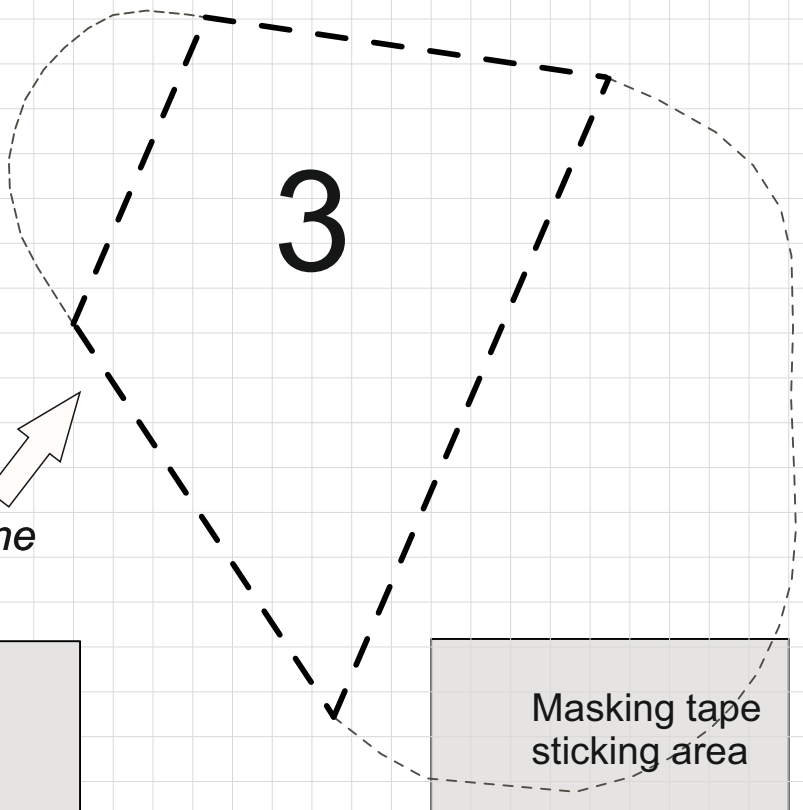
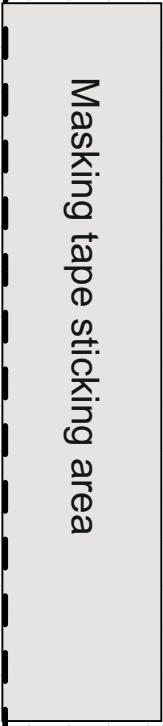
1



2



Cut out line



3



Cut out line

