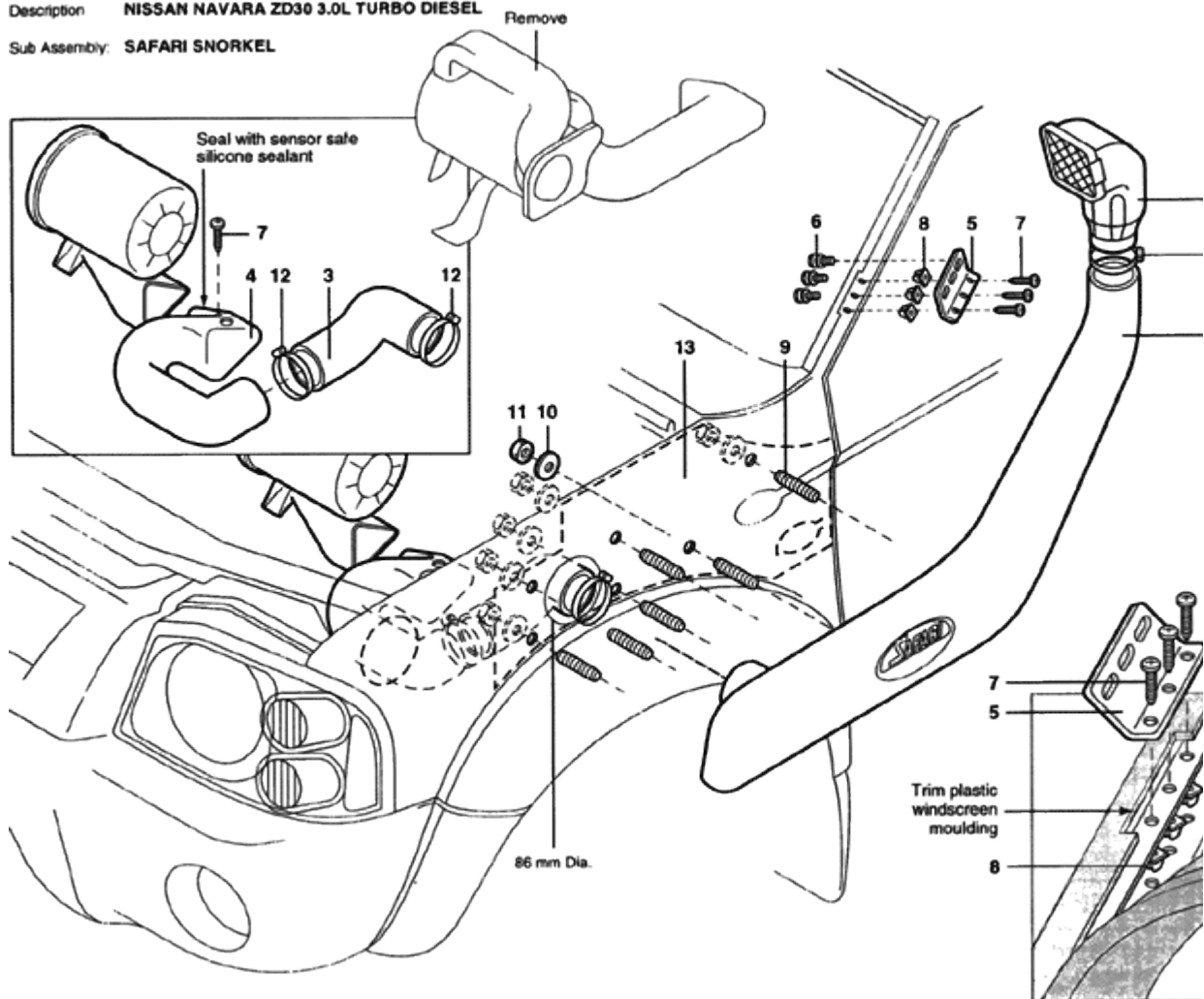


# SS 725HF

## Installation Guide

Model No: **SS725HF** 3007/02  
Description **NISSAN NAVARA ZD30 3.0L TURBO DIESEL**  
Sub Assembly: **SAFARI SNORKEL**



[Click Image above for High Resolution Diagram](#)

**NISSAN NAVARA D22 3.0L TURBO DIESEL ZD30 (DDT)**

**Fitment to:** Left hand side

**Fitting time:** Approximately 120 minutes

**Special Tools:**

- 86mm holesaw
- Step drill
- CRC or similar lubricant
- Silicone sealant (sensor safe)
- Sharp knife
- Sikaflex-227
- Heat gun

Remove:

- 1
- Air Cleaner Assembly.
  - Air Entry Duct (including pre-spinner and mounting brackets).
  - Left Hand Front Wheel Arch Liner.
  - Left Hand Side Indicator Lens.
  - Left Hand 'A' Pillar Rubber Wind Lacing Moulding.

2

Tape the template to the upper rear corner of the left guard. Using a felt pen, mark all hole positions, including indicator relocation position. Remove template.

3

Drill a pilot hole for each hole position using the 86mm holesaw. Drill the main hole position, drilling the hole square to the guard, using the step drill. Drill the 6 mounting hole positions to 16mm using the air hacksaw. Cut out the new indicator hole position, de-burr and paint all holes.

4

Screw the 6 mounting studs into the snorkel body inserts and carefully position the snorkel body onto the guard. With the snorkel body correctly positioned, position the upper mounting bracket and mark where the plastic windscreen moulding requires trimming. (Refer to inset drawing). Remove snorkel body.

5

With a sharp knife, trim the plastic windscreen moulding allowing clearance for the bracket at either end of approximately 3mm each end. Re-position the rubber 'A' pillar wind lacing moulding and mark where it requires trimming (refer to inset drawing). Trim away the section which locks it into the plastic windscreen mould.

6

Fasten the upper mounting bracket to the snorkel body using necessary hardware. Carefully position the snorkel body onto the guard. With the snorkel body correctly positioned on the guard and the 'A' pillar mark the 3 mounting bracket hole positions on the plastic windscreen moulding. Remove snorkel body.

- 7 Drill a 5.0mm hole for each of the 3 marked hole positions drilling through the plastic windscreen mould and 'A' pillar. Remove the plastic windscreen mould and drill the 3 holes in the 'A' pillar to 8.0mm. De-burr and paint holes.
- 8 Insert plastic body clips into the 'A' pillar and apply a bead of Sikaflex around each body clip. Apply Sikaflex to the plastic windscreen mould where required and fasten into position.
- 9 Fasten upper mounting bracket into position and re-fit rubber wind lacing moulding (making sure it clips back into position properly). Position the snorkel body onto the guard and fasten to the guard using necessary hardware. Fasten upper mounting bracket to the snorkel body.
- 10 Check the fitment of the connecting duct (Item No. 4) to the air cleaner housing (if required using the heat gun, heat up the connecting duct to achieve fitment to the air cleaner housing). Install the connecting duct through the larger unused hole in the inner guard with the duct in position. Apply a liberal amount of either silicone sealant or Sikaflex to the air cleaner inlet and connecting duct. Connect the air cleaner inlet to the connecting duct and fasten the air cleaner housing into position. Remove the rubber air temperature sensor grommet from the standard duct and apply Sikaflex to the grommet and refit into the hole in the connecting duct.
- 11 Apply CRC to either end of the air entry hose (Item No. 3). Position the hose clamps and install the hose onto the connecting duct and onto the snorkel body snout. Fasten hose clamps. Secure the connecting duct to the air cleaner housing using self tapping screw supplied.
- 12 Apply a bead of silicone sealant (sensor safe) to the air temperature sensor and re-fit into the rubber grommet. Re-fit the side indicator lens and inner guard liner to the vehicle.
- 13 Install air ram assembly to snorkel body and fasten hose clamp.

**WARNING: IT IS THE INSTALLERS RESPONSIBILITY TO ENSURE ALL CONNECTIONS ARE WATER TIGHT.**

ITEM	IMAGE	DESCRIPTION	QTY	PART NO.
------	-------	-------------	-----	----------

1		BODY - SNORKEL	1	425-133-000
2		3" AIR RAM ASSEMBLY	1	000-135-050
3		HOSE - AIR ENTRY	1	425-024-000
4		DUCT - CONNECTING	1	425-123-000
5		BRACKET - UPPER MOUNTING	1	425-032-000
6		BOLT - HEX 6mm x 1.0mm x 14mm	3	000-002-100

7		SCREW - S/T 4.2mm x 16mm	4	000-951-300
8		CLIP - BODY (PLASTIC)	3	000-960
9		STUD - S/S 8mm x 1.25 x 25mm O/L	6	000-110
10		WASHER - BODY 8mm x 30mm	6	000-311
11		NUT - NYLOC 8mm x 1.25mm	6	000-205
12		CLAMP - HOSE 70/90mm	2	000-908
13		TEMPLATE	1	425-017-000

14		HOSE CLAMP - SIZE 48 (BLACK)	1	000- 918/B
----	-----------------------------------------------------------------------------------	---------------------------------	---	---------------