

FITTING INSTRUCTIONS

BP5190007L & R

BP5190027L & R

TOYOTA HILUX 2015 ON FRONT

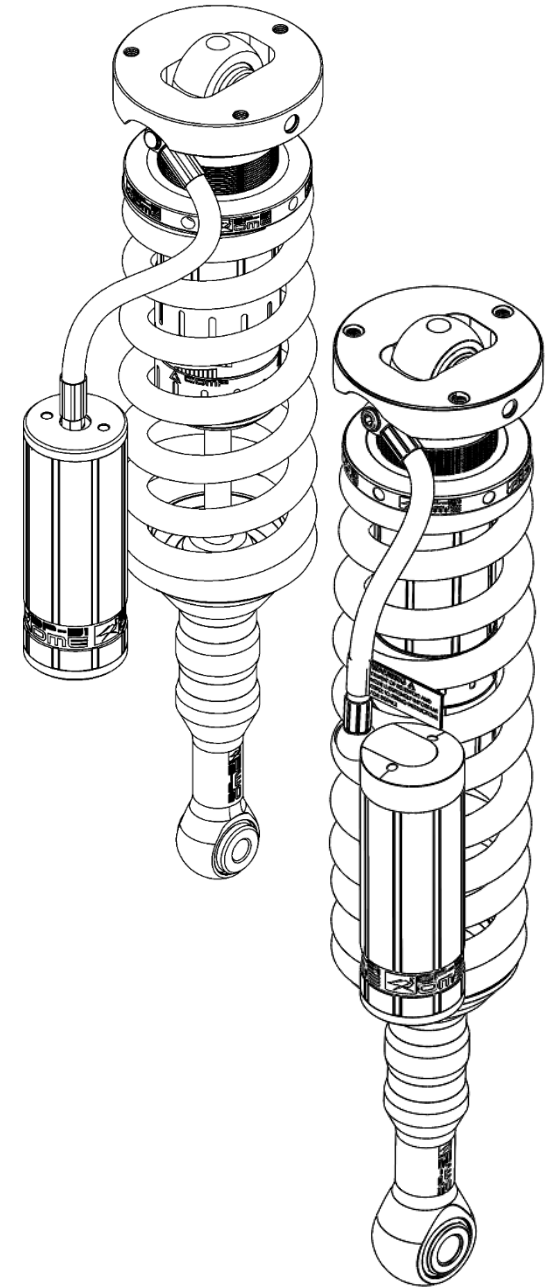
BP5190033L & R

TOYOTA HILUX 2024 ON ROGUE/GR SPORT

WARNING

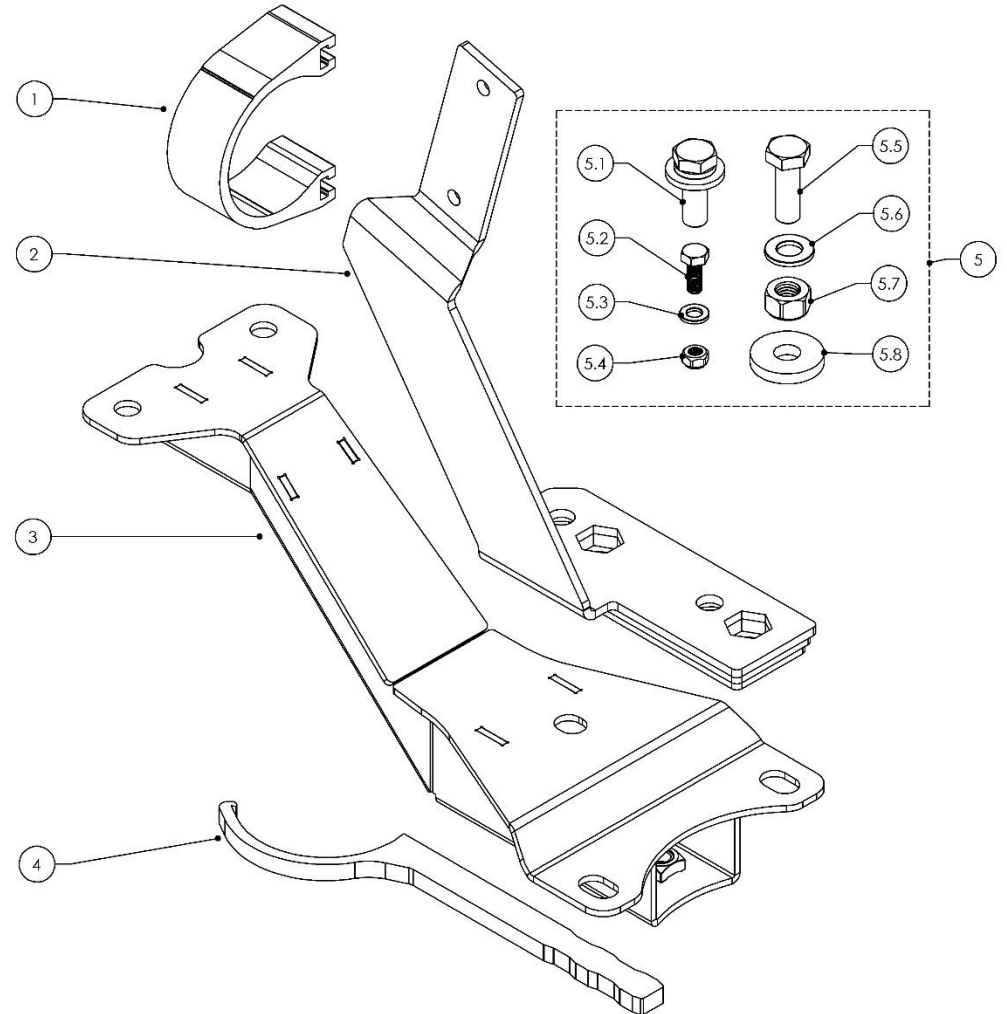
- ◆ This product must be installed exactly as per these instructions using only the hardware supplied.
- ◆ In the event of damage to any suspension component, contact your nearest authorised ARB stockist. Repairs or modifications to the suspension system components must not be attempted.
- ◆ Do not use this product for any vehicle make or model, other than those specified by ARB.
- ◆ Do not remove labels from suspension components.
- ◆ This product or its fixing must not be modified in any way.
- ◆ The installation of this product may require the use of specialized tools and/or techniques
- ◆ It is recommended that this product is only installed by trained personnel
- ◆ These instructions are correct as at the publication date. ARB Corporation Ltd. cannot be held responsible for the impact of any changes subsequently made by the vehicle manufacturer
- ◆ During installation, it is the duty of the installer to check correct operation/clearances of all components
- ◆ Work safely at all times

Note: These fitting instructions should be read in conjunction with the vehicle workshop manual.



FITTING KIT CONTENTS – VM80010018

Item	Description	Qty.	Part Number
1	RESERVOIR CLAMP	2	VE10010003
2	FRONT RESI BRACKET RIGHT (SHOWN)	1	VE10020020R
	FRONT RESI BRACKET LEFT	1	VE10020020L
3	HILUX BRACING MOUNT	2	VG60050018
4	ADJUSTER TOOL	1	VC10010071
5	2015 HILUX FASTENER KIT	1	VM60010008
5.1	M10 X 1.5 X 30MM BOLT KIT	6	6151555
5.2	M6 X 16MM BOLT	4	VD60030003
5.3	M6 WASHER	5	VE70020005
5.4	M6 NYLOC NUT	4	VD60010003
5.5	M10 X 1.5 X 30MM BOLT	4	6151232
5.6	M10 FLAT WASHER	4	VE70020003
5.7	M10 NYLOCK NUT	4	VD60010005
5.8	M10 X 30 X 5MM SPACER WASHER	2	4584296



DAMPER PREPARATION

Before fitment the spring preload may need to be adjusted to suit your front accessory fitment and desired ride height.

Use workshop tool kit VM80020001 to aid spring adjustment.

The preload is set at the factory to 20mm as shown by the diagram. This aims to achieve around 40mm increase in ride height over OE when a Bull Bar and winch are fitted.

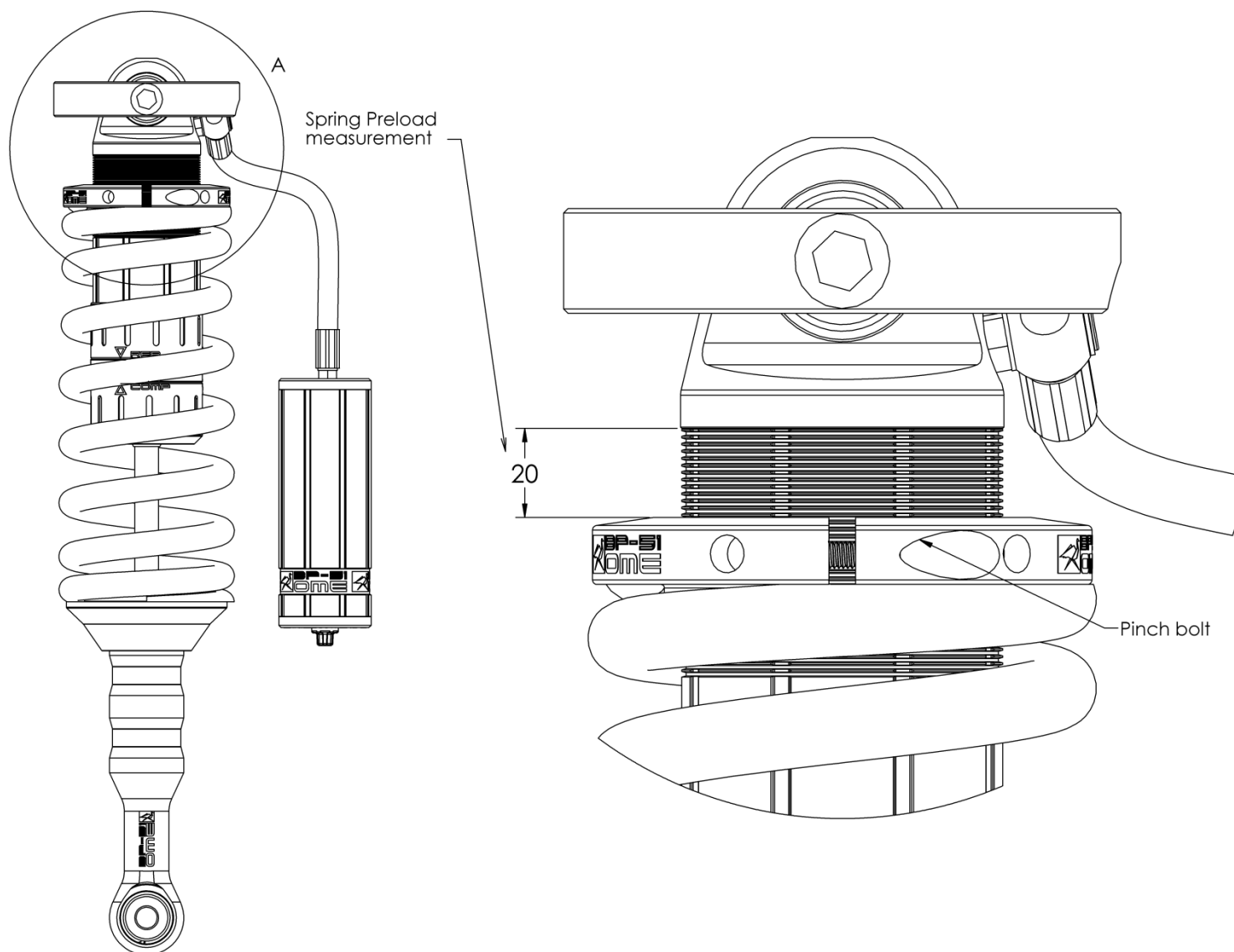
It is required to set the preload before the strut assembly is fitted to the vehicle. Use a spring compressor to compress the spring, loosen the pinch bolt on the preload ring and adjust to the desired setting. Tighten the pinch bolt and remove the strut assembly from the spring compressor.

As a guide, set the preload as specified below to achieve around 40mm increase in ride height.

Front accessories	Preload	
	Diesel	Petrol
Bar & winch	20 mm	15 mm
Bar only	15 mm	10 mm
No accessories	10 mm	5 mm

Spring preload must only be adjusted when a spring compressor is used to take load off the preload ring.

DO NOT attempt to adjust preload with load on the spring when fitted to the vehicle.



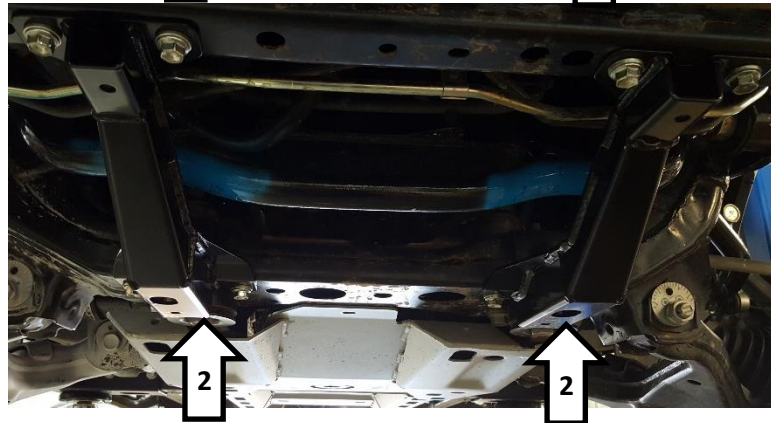
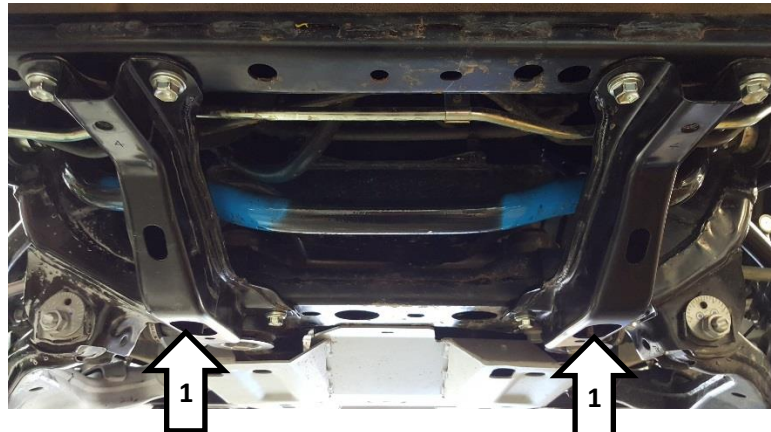
FRONT CHASSIS BRACE MOUNTING SEQUENCE

NOTE: Before installing the front dampers both of the new front chassis braces must be installed.

Remove the front under body protection panel and retain all fasteners.

Remove both existing front chassis braces and disregard (1). Retain all fasteners.

Mount the new front chassis brace using the retained original fasteners (2). Torque original fasteners to **40 N.m** (30 ft.lb).

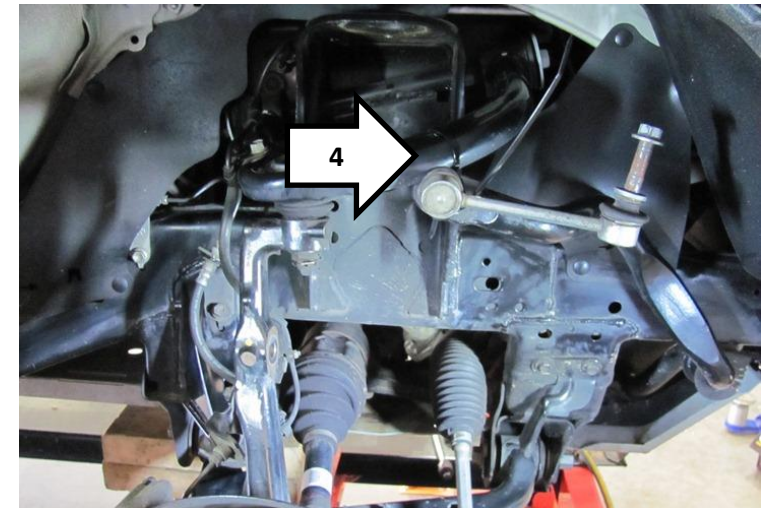
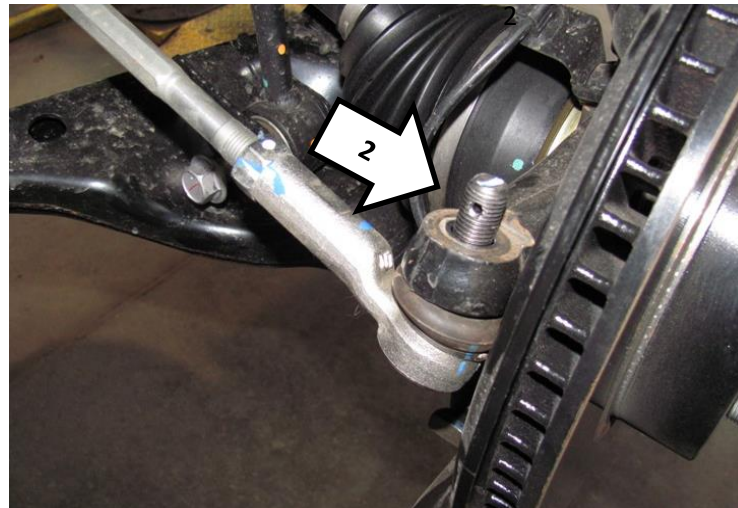
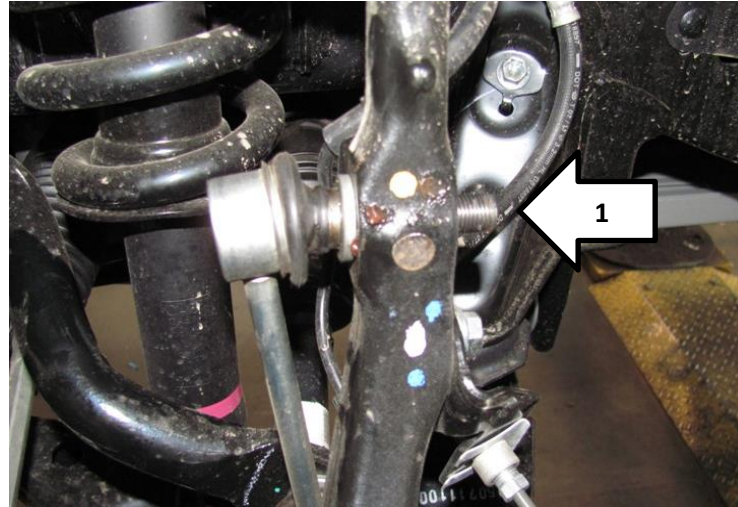


DAMPER MOUNTING SEQUENCE

Remove old dampers from vehicle.

For LH and RH detach sway bar link from spindle (1) and ball joint from steering arm (2) and remove sway bar saddles (3). Retain original fasteners.

To provide good access for inserting the new strut assembly it helps to cable tie the sway bar to the upper arm (4).



DAMPER MOUNTING SEQUENCE

When mounted in the vehicle the hose and reservoir should be towards the front.

BP5190007, BP5190027

1. Fit the damper and secure the top mount with M10 x 30 SEMS bolt assemblies (6151555) finger tight.
2. Fit the bottom eyelet mount using original bolt and nut, torque to 98Nm.
3. Torque the top mount bolts to 44Nm.

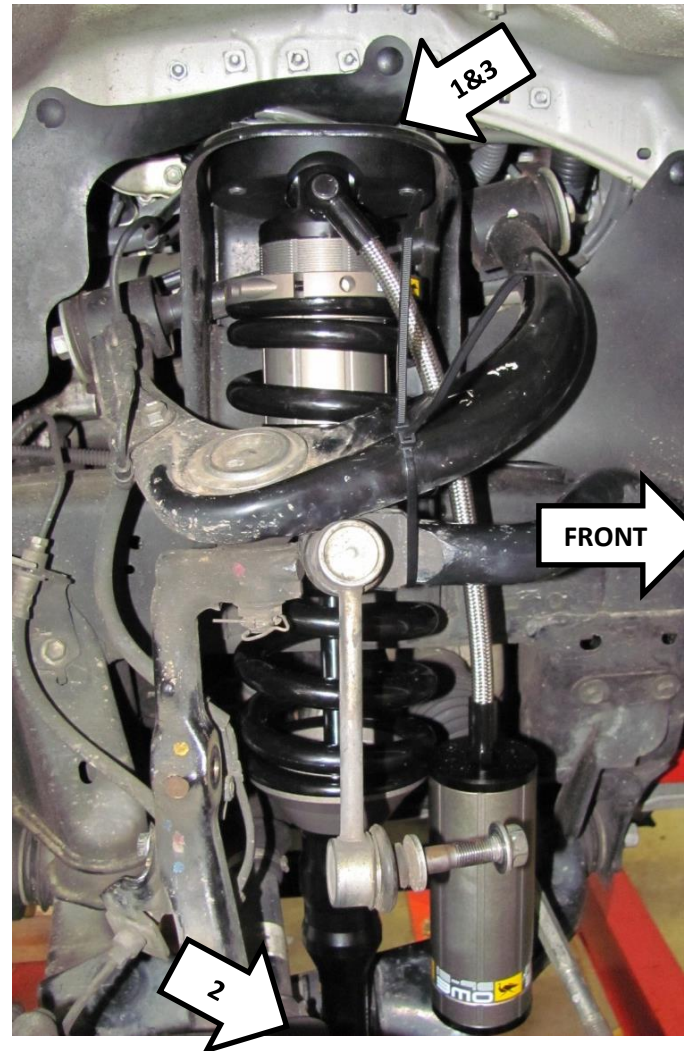
NOTE: FOR BP5190027 SECURE THE BOTTOM MOUNT BOLT WHEN THE VEHICLE IS SETTLED ON THE GROUND TO PREVENT PREMATURE BUSH WEAR.

BP5190033

1. Fit the damper and secure the bottom mount with the original bolt, torque to 98Nm.
2. Fit the top mount bolts and torque to 44Nm.

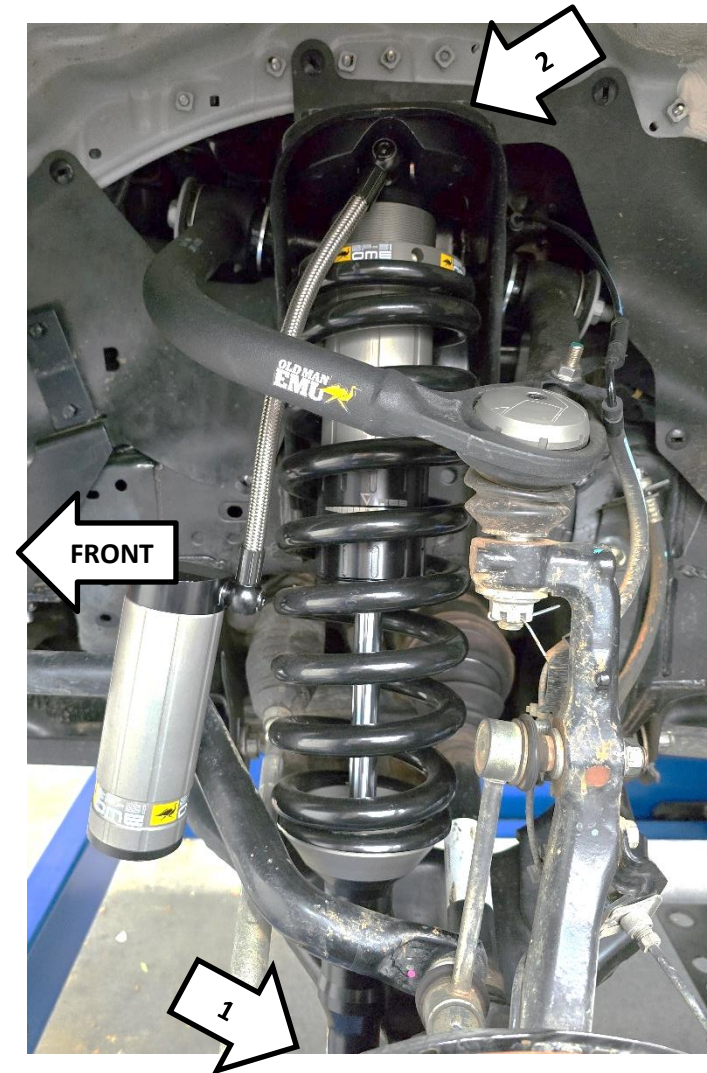
BP5190007L & R, BP5190027L & R

RHS SHOWN



BP5190033L & R

LHS SHOWN



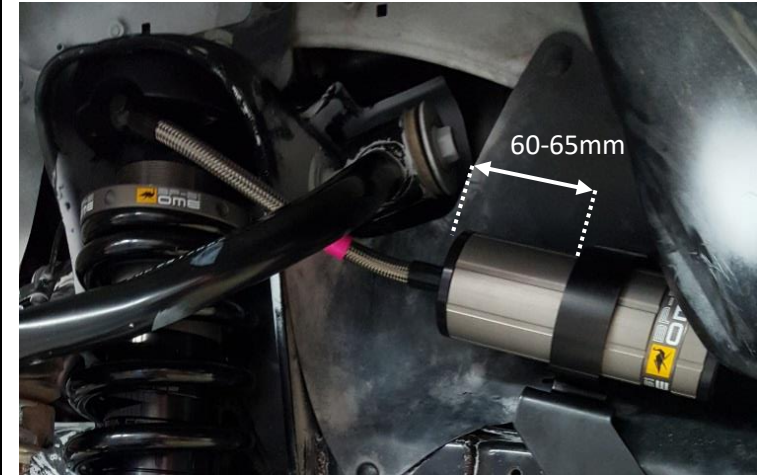
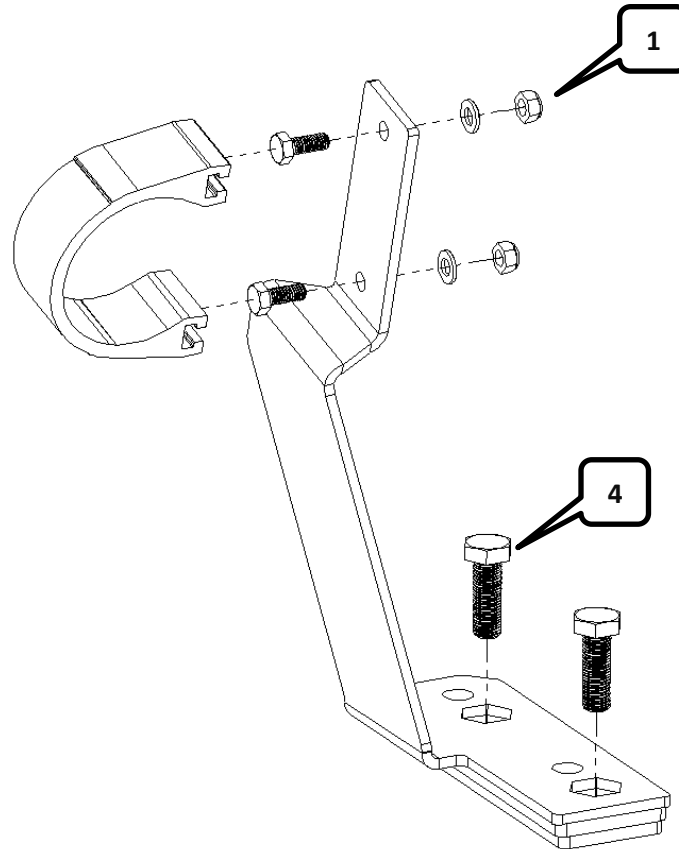
RESERVOIR MOUNTING SEQUENCE

1. Lightly fasten the reservoir clamp onto the bracket as shown and fit over the reservoir.
2. Tighten the M6 fasteners so that the reservoir is firmly held but can still be repositioned within the saddle.

SWAY BAR MOUNTING SEQUENCE

3. Remove the sway bar saddle and rubber D bush.
4. Fit M10 x 30 fasteners (6151232) in the hexagonal shaped cavities as shown.
5. Fit the reservoir mounting bracket to the chassis using the original fasteners.
6. Fasten the sway bar saddle onto the new M10 fasteners fitted in Step 4 and secure using the M10 washers and Nyloc nuts supplied.
7. Rotate the reservoir as required to ensure the hose is well routed without kinks and with clearance to the upper control arm. Secure the reservoir in place.

Repeat for LHS.



BP5190007L & R, BP5190027L & R

BP5190033L & R



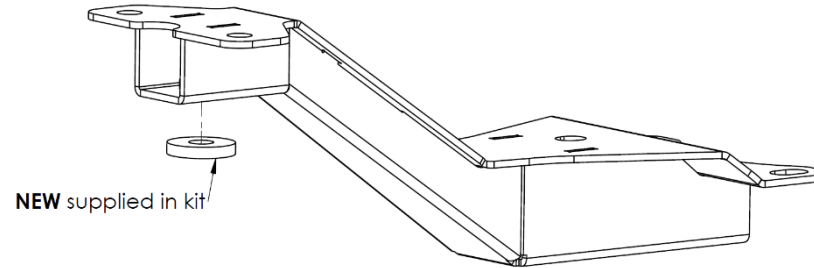
FINAL STEPS

Check all fasteners are tightened securely as per the table below.

Re-attach the front under body protection panel using the retained original fasteners. If using ARB under body protection add the 5mm thick washer provided between the front mounting section of the chassis brace and under body protection panel (shown right).

The pink flag can be removed from the hose.

Fastener	Torque N.m (ft.lb)
Front brace to chassis	40 (30)
Sway bar link to upright	70 (52)
Steering tie rod end to upright	88 (65)
Reservoir bracket to chassis	40 (30)
Sway bar mount to reservoir bracket	40 (30)
Strut top hat	44 (32)
Strut to lower control arm	98 (72)



BP5190007L & R, BP5190027L & R



BP5190033L & R



DAMPING ADJUSTMENT

These dampers have been set in the factory to be used for a vehicle with Bull Bar and Winch fitted.

If your accessory fitment differs, use the table below as a guide for recommended Compression and Rebound adjuster settings.

Refer to the Owner's Manual for more information.

Accessories	Compression	Rebound
Factory setting	4	6
Bar & winch	4-8	6-10
Bar only	2-6	5-9
No accessories	0-4	4-8

SPECIFICATIONS

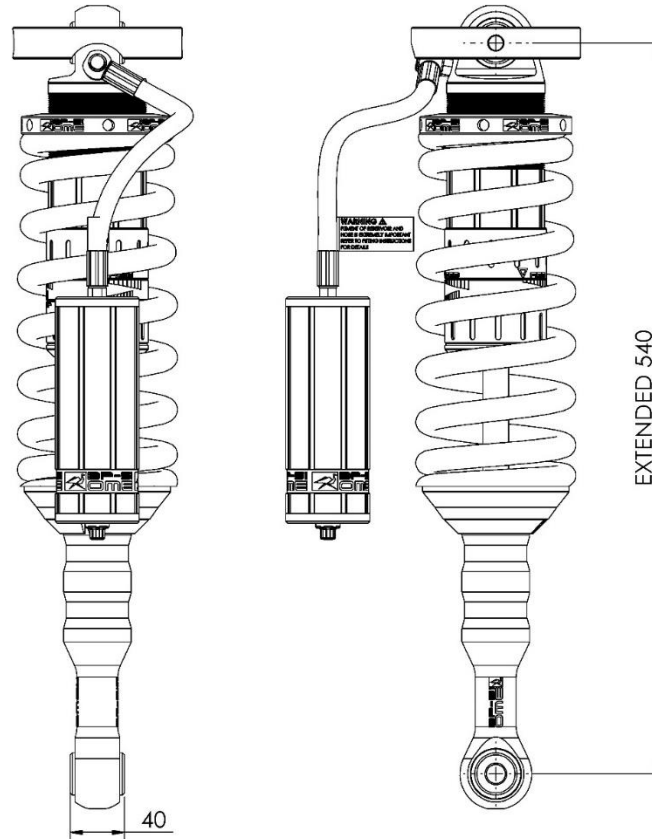
	Extended	Compressed
BP5190007 & 27	540mm	439mm
BP5190033L & R	650mm	494mm

SPARE PARTS

Refer to Service and Parts Manual, section:

- BP-51 S&P 3.1-BP5190007
- BP-51 S&P 3.1-BP5190027
- BP-51 S&P 3.1-BP5190033L
- BP-51 S&P 3.1-BP5190033R

BP5190007L & R, BP5190027L & R



BP5190033L & R

