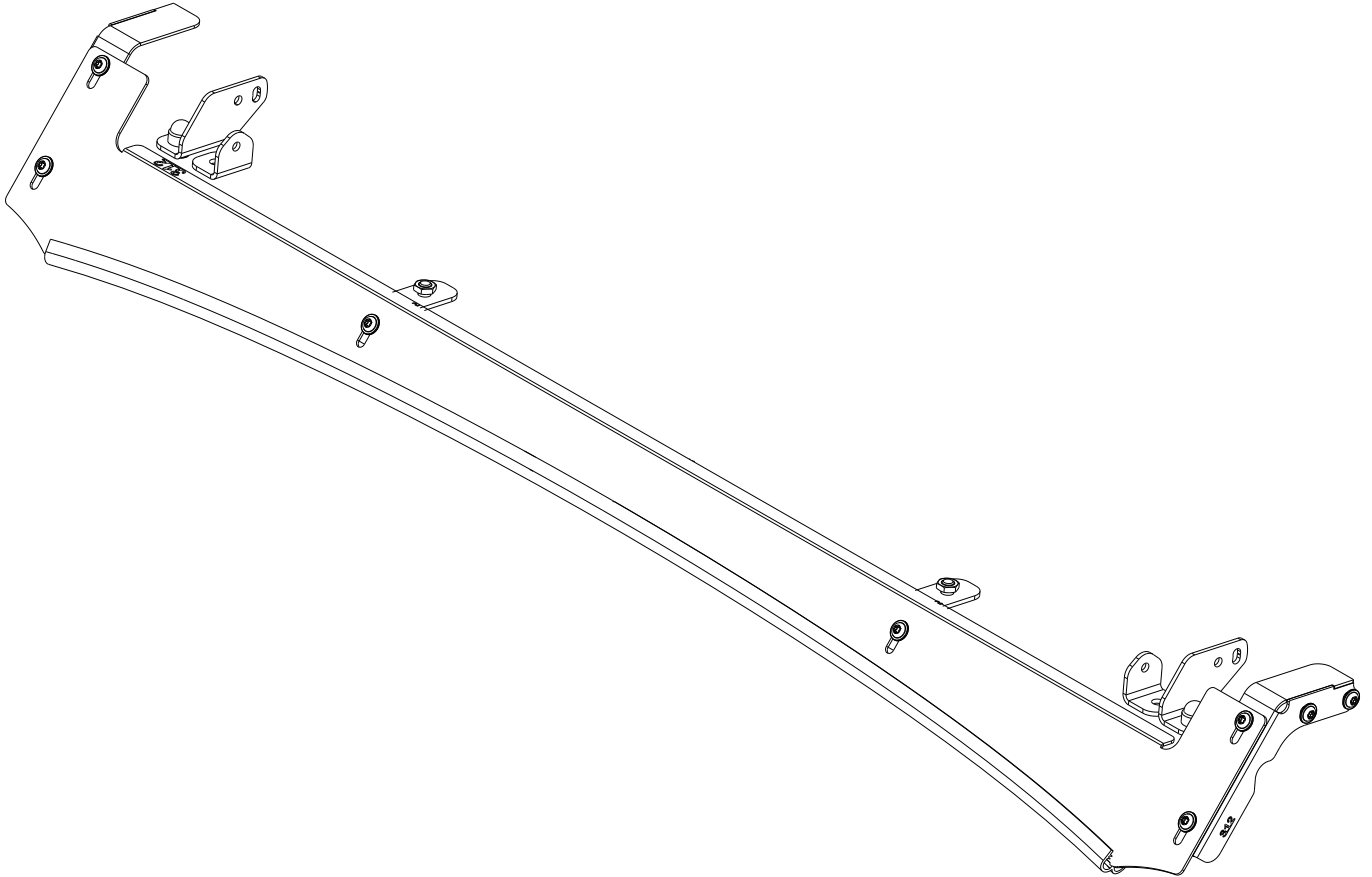


FRONT RUNNER**FORD RANGER T6.2 (2022-CURRENT)/VW AMAROK (2023-CURRENT)
DOUBLE CAB SLIMSPOK RACK 40" LIGHT BAR WIND FAIRING**

RRAC377

**READ ME !** 

Thank you for purchasing a Front Runner Ford Ranger T6.2 (2022-Current)/VW Amarok (2023-Current) Double Cab Slimsport Rack 40" Light Bar Wind Fairing

Before you start, take a moment to familiarize yourself with the Fitting Instructions and the included components.

Refer to Page 2 for a list of all the components, quantities and tools required.

IMPORTANT WARNING! 

IT IS CRITICAL THAT ALL FRONT RUNNER PRODUCTS BE PROPERLY AND SECURELY ASSEMBLED AND ATTACHED TO YOUR VEHICLE. IMPROPER ATTACHMENT COULD RESULT IN AN AUTOMOBILE ACCIDENT, AND COULD CAUSE SERIOUS BODILY INJURY OR DEATH. YOU ARE RESPONSIBLE FOR ASSEMBLING AND SECURING ALL FRONT RUNNER PRODUCTS TO YOUR VEHICLE, CHECKING THE ATTACHMENTS PRIOR TO USE, AND PERIODICALLY INSPECTING THE PRODUCTS FOR ADJUSTMENT, WEAR AND DAMAGE. THEREFORE, YOU MUST READ AND UNDERSTAND ALL OF THE INSTRUCTIONS AND PRECAUTIONS SUPPLIED WITH YOUR FRONT RUNNER PRODUCT PRIOR TO INSTALLATION OR USE. IF YOU DO NOT UNDERSTAND ALL OF THE INSTRUCTIONS AND CAUTIONS, OR IF YOU HAVE NO MECHANICAL EXPERIENCE AND ARE NOT THOROUGHLY FAMILIAR WITH THE INSTALLATION PROCEDURES, YOU SHOULD HAVE THE PRODUCT INSTALLED BY A PROFESSIONAL INSTALLER OR OTHER QUALIFIED PERSONNEL.

NOTE: Front Runner will not be responsible for any damage caused by the failure to install the product according to these instructions.

Please call us if you have any questions about the installation of this product.



1 GET ORGANIZED

IN THE BOX

- 1 1 X Light Bar Wind Fairing
- 2 1 X Wind Fairing LH Support Bracket
- 3 1 X Wind Fairing RH Support Bracket
- 4 2 X Wind Fairing Mid Support Bracket
- 5 1 X Light Bar Bracket 01 LH - High Profile
- 6 1 X Light Bar Bracket 01 RH - High Profile
- 7 2 X Light Bar Bracket 02 - Low Profile
- 8 1 X Rubber Seal 1050mm Long
- 9 10 X M6 x 16 Button Head Bolt
- 10 2 X M8 Thin Hex Nut
- 11 2 X M8 x 12 Button Head Screw
- 12 2 X M8 Schnorr Washer
- 13 2 X M8 x 16 Hex Bolt
- 14 2 X M8 Nyloc Nut
- 15 2 X M8 Nut Cap
- 16 1 X Vinyl Protective Strip

TOOLS NEEDED

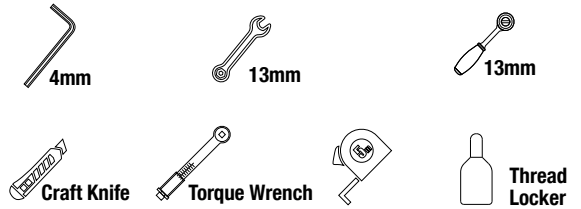
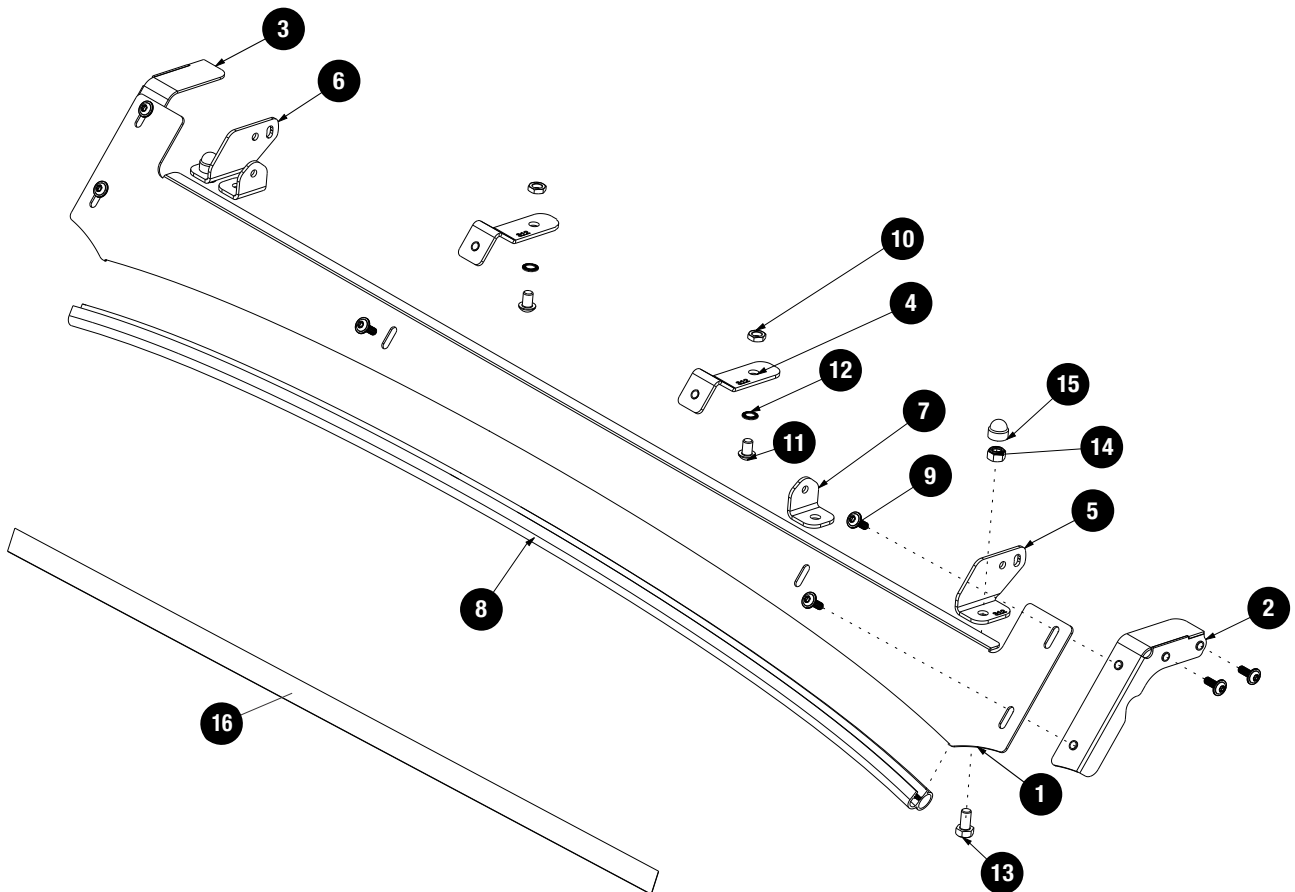


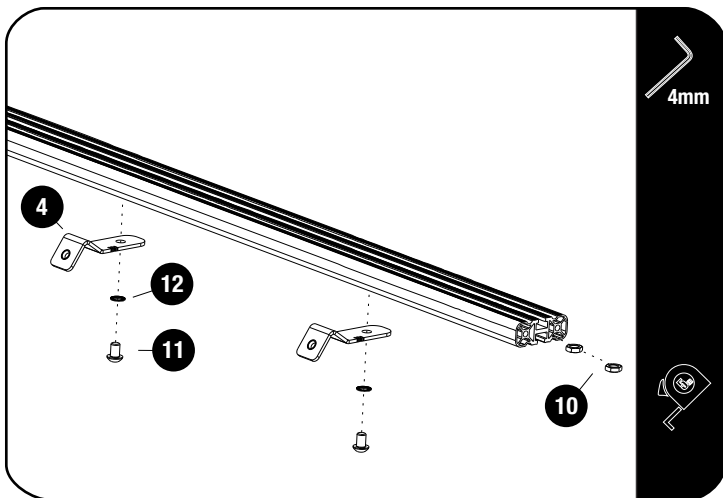
FIGURE 1.1



2

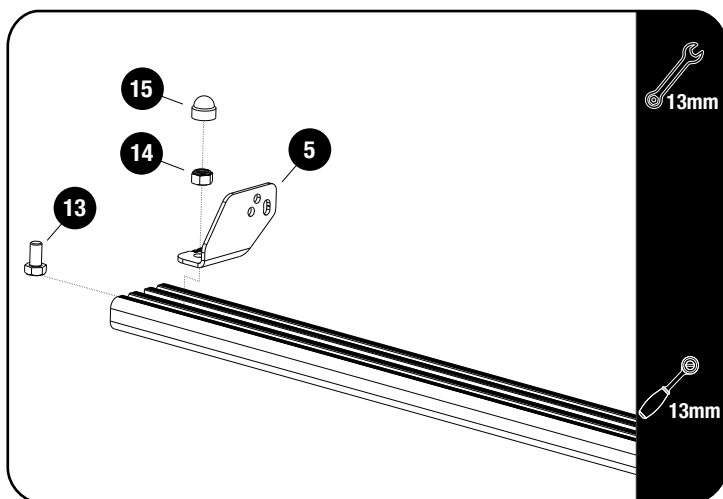
FIT AND SECURE

2.1



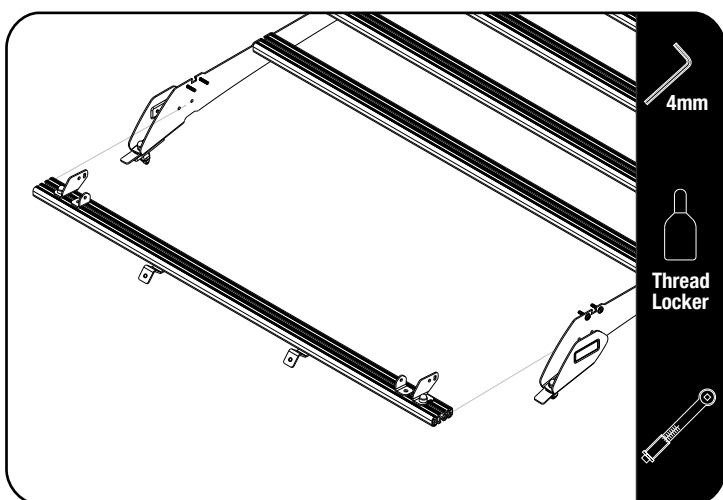
Slide one M8 Thin Nut (Item 10) into the T-Slot of the front slat. Center the Mid Support Bracket (Item 4) in the Middle of the slat using a tape measure and secure using a Schnorr Washer and M8 x 12 Button Head Bolt (Item 11 & 12). Fully tighten.

2.2



Fit the Light Bar Bracket 01 LH / RH (Item 5 & 6) for the 40" Light Bar, using M8 x 16 Hex Bolt & M8 Nyloc Nut (Items 13 & 14). Fit the light bar and center it on the slat before fully tightening the brackets.
Place M8 Nut Caps (Item 15) over all Hex Bolts.

2.3



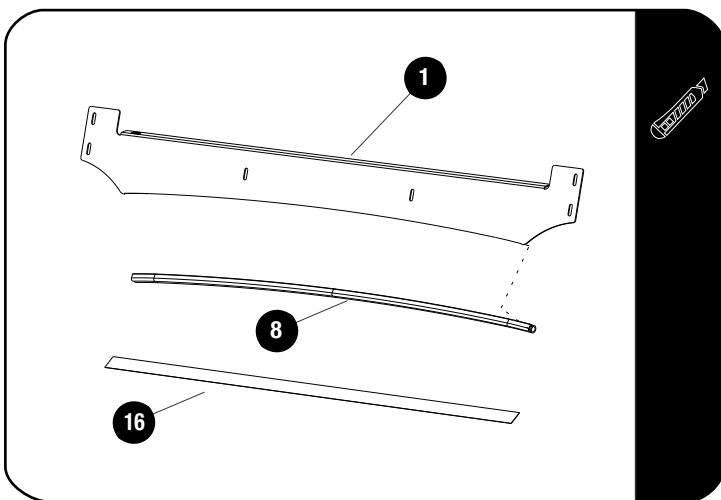
Secure assembly 2.2 to the front two top holes on the foot rails using the M6 x 20 Button Head Bolts supplied with KSFR007.

Apply a drop of Thread Locker on each M6 x 20 Button Head bolt before securing the slats.

Tightening Torque 8-10Nm / 5.9 ft lb - 7.38 ft lb.

2 FIT AND SECURE

2.1



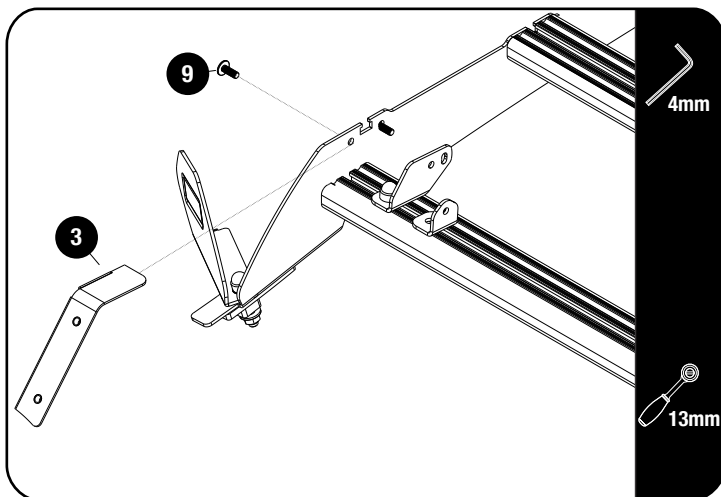
Fit the Wind Fairing Rubber (Item 8) to the Wind Fairing (Item 1). Using the notched section as a guide, trim if needed.

Use the Clear Protection Strip (Item 16) included to protect the roof paint work, where the Rubber Trim will be making contact with the roof.

Before applying the Clear Protection Strip, clean the roof area with Denatured Alcohol.

Cut the Protection strip to fit the roof of the Vehicle.

2.2



Swing out the Dimple Plates to allow access to tighten the Side Support fasteners.

Secure the Wind Fairing Side Supports LH / RH (Item 2 & 3) to the Foot Rails top holes as shown using M6 x 16 Button Heads (Item 9).

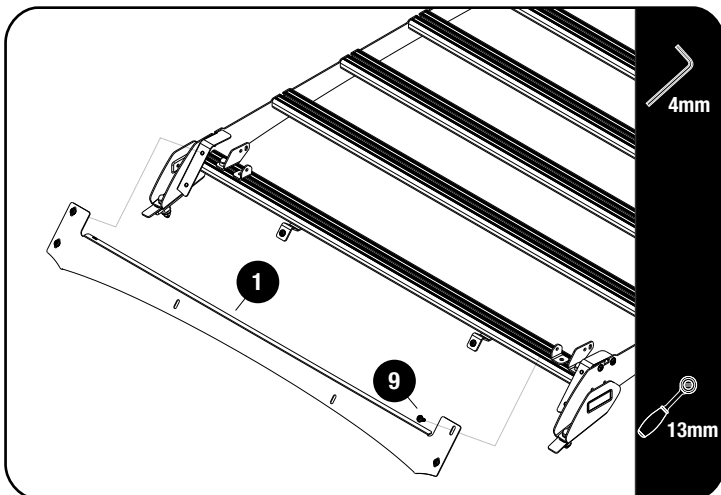
Swing the Dimple Plates back and fully tighten the front two M8 x 45 Hex Bolt.

Tightening Torque:

M6 : 8-10Nm / 5.9 ft lb - 7.38 ft l

M8 : 15-20Nm / 11.06 ft lb - 14.75 ft lb

2.3



Secure the Wind Fairing (Item 1) first to the Side Bracket Assemblies (Item 2 & 3), using M6 x 16 Button Head Bolts (Item 9).

Slide the Middle Bracket Assemblies (Item 2) to line up with the corresponding slots on the Wind Fairing (Item 1) and secure using M6 x 16 Button Head Bolts (Item 9).

Tighten all fasteners and place a M8 Nut Cap (Item 7) on each M8 Nyloc Nut.

Tightening Torque:

M6 : 8-10Nm / 5.9 ft lb - 7.38 ft l

M8 : 15-20Nm / 11.06 ft lb - 14.75 ft lb

3

FINISH

Congratulations! You did it. Take a step back and admire your work!

4

INSTALL OTHER VEHICLE AND RACK ACCESSORIES

Now's the time to visit your favorite Front Runner Dealer in person or online.

Be sure to tag us. We love to see our gear in action! #FrontRunnerOutfitters #BornToRoam

Share your adventures on: 