

LAZER

H I G H P E R F O R M A N C E L I G H T I N G



FRONT RUNNER ROOF RACK MOUNTING KIT

FITTING INSTRUCTIONS

TECHNICAL SUPPORT

aaron@lazerlamps.com / sales@lazerlamps.com
+44 (0)1992 945601 / +44 (0)1992 677374

WHAT'S INCLUDED

- 2x Linear Side Mounting Bracket (LH/RH)
- 2x M8 Slot Nuts
- 2x M8 Spring Washers
- 2x M8 Bolts

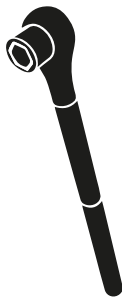
DIFFICULTY LEVEL



TOOLS REQUIRED



DRILL BIT
(SWITCH - 20MM)



METRIC
SOCKET SET



WIRE STRIPPERS
AND RATCHET CRIMPERS



WIRE CUTTERS

PRE-INSTALLATION CHECKS

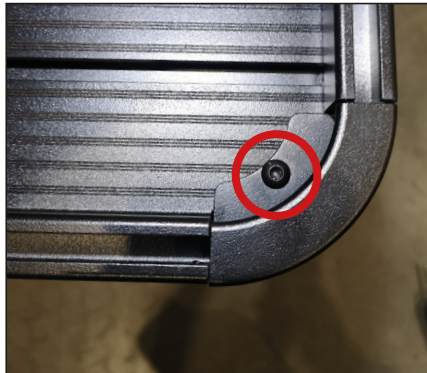
Ensure battery is disconnected.

INSTALLATION



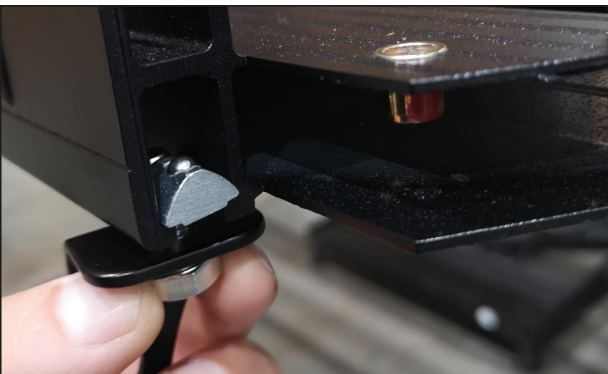
STEP 1

Assemble the brackets as shown.



STEP 2

Locate the end cap screw and remove.



STEP 3

Install both of the brackets into the channel.



STEP 4

Re-install end cap on the roof rack.

INSTALLATION CONTINUED.



STEP 5

Line the bracket to the edge of the rack as shown (Both sides).



STEP 6

Tighten the lamp side brackets to the roof rack (both sides).



STEP 7

Install the Linear 42 or Triple-R 24 and secure with included security screws and ensure that the lamp is central across the roof rack.



STEP 8

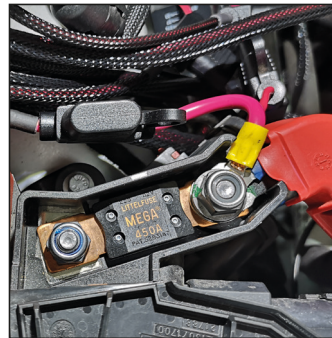
Install the roof rack assembly to the vehicle.



STEP 9

If you have mounted Linear-42, we would recommend installing the included foam between the lamp and roof rack to avoid wind noise.

WIRING - WITH SPLICE (ECE APPROVED LAMPS ONLY)

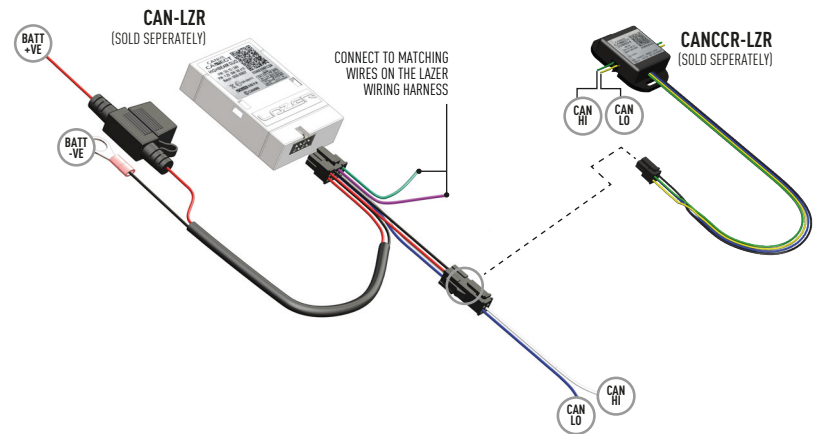


STEP 1

Install the relay from the wiring harness and connect the live and earth.

STEP 2

For vehicles where it is not possible to locate a 12V high beam signal (at the back of the highbeam trigger), it will be necessary to take the high beam signal from the vehicle's CAN system. For vehicle specific CAN instructions, please download the "CANM8 Connect" App.



STEP 3

Drill a 10mm hole near the roof rack in the roof for cable entry (this will require the vehicles headlining to be dropped - **check for air-bag before drilling**). Remove the plug from the lamp cable feed through the cable entry hole (be sure to use the supplied grommet and seal with sealant).

Alternatively, it may be possible to run the cable up the outside of the 'A' pillar or windscreen, without having to drill a hole. If this is the case, route the cable as desired and plug the lamp in (be sure to secure any cables).



STEP 4

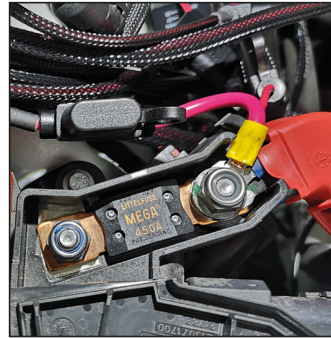
If you have drilled a hole for cable entry, route the wiring kit cables through the engine bay into the vehicle (via the vehicles cable grommet) and up the 'A' Pillar.

The connection of the wiring kit and lamp can be connected within the headlining of the vehicle.

If you did not drill a cable entry hole, please ignore this step.



WIRING - WITH SWITCH



STEP 1

Install the relay from the wiring harness and connect the live and earth.



STEP 2

Route Switch cable (Will need to remove switch temporary) and light bar cable through the grommet and reinstall grommet.



STEP 3

Find a suitable location for switch mounting, then drill 20mm hole. Re-connect crimp terminals to switch.



STEP 4

Drill a 10mm hole near the roof rack in the roof for cable entry (this will require the vehicles headlining to be dropped - **check for air-bag before drilling**). Remove the plug from the lamp cable feed through the cable entry hole (be sure to use the supplied grommet and seal with sealant).



Alternatively, it may be possible to run the cable up the outside of the 'A' pillar or windscreen, without having to drill a hole. If this is the case, route the cable as desired and plug the lamp in (be sure to secure any cables).



STEP 5

If you have drilled a hole for cable entry, route the wiring kit cables (up the 'A' Pillar).

The connection of the wiring kit and lamp can be connected within the headlining of the vehicle.

If you did not drill a cable entry hole, please ignore this step.



LAZER
HIGH PERFORMANCE LIGHTING

WWW.LAZERLAMPS.COM

+44 (0)1992 677374
sales@lazerlamps.com

Lazer Lamps Ltd, Units 1&2 Harlow Mill Business Centre,
Riverway, Harlow, Essex. CM20 2FD. United Kingdom



MADE IN THE UK



/LAZERLAMPS



/LAZERLAMPS