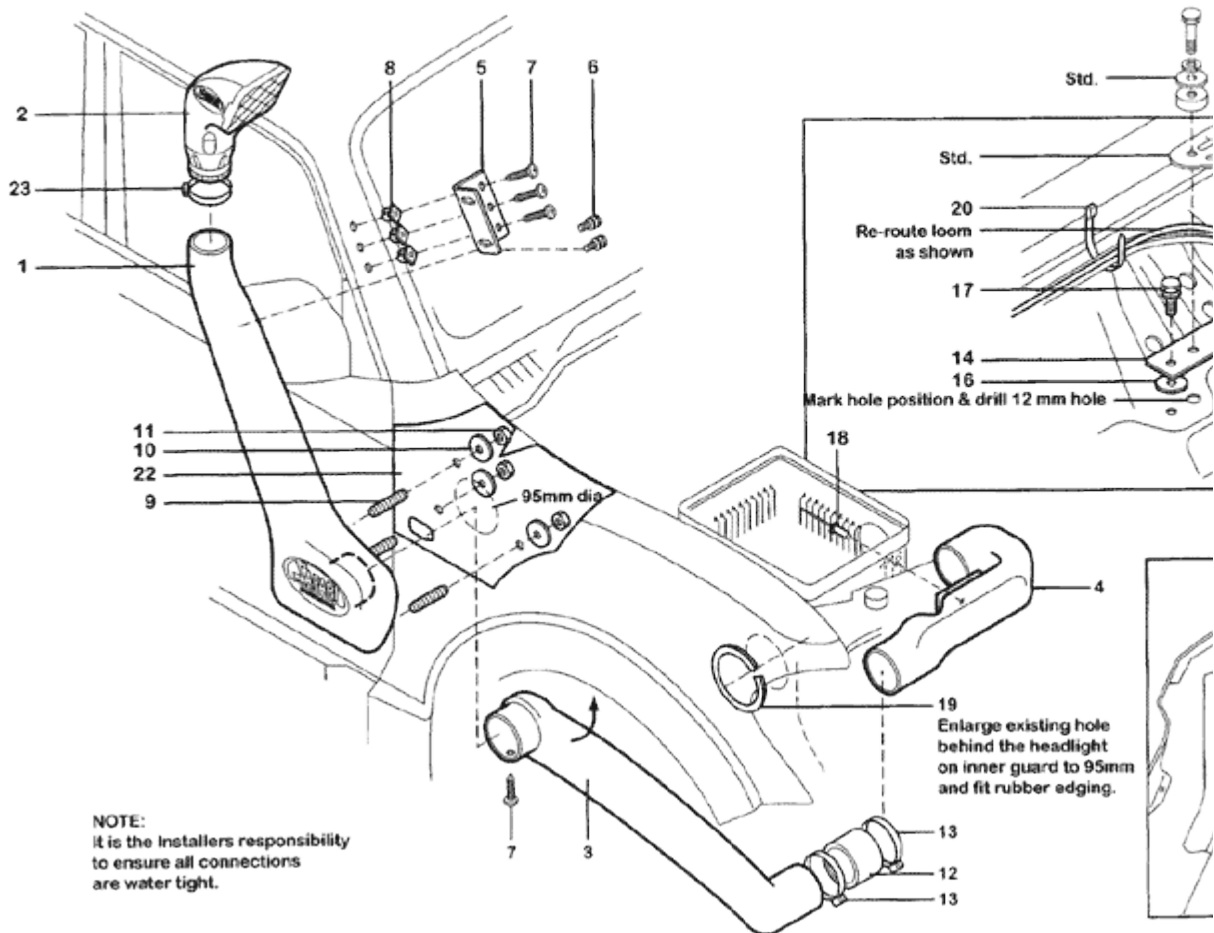


SS 35HF

Installation Guide

Model No: **SS35HF** 05/04/04
Description: **MITSUBISHI PAJERO V6/V7 SERIES 3.2 DiD**
Sub Assembly: **SAFARI SNORKEL**



[Click Image above for High Resolution Diagram](#)

**MITSUBISHI NP PAJERO V6/V7 SERIES 3.2L DiD (4M41 engine)
3.5LV6 Petrol (6G74 engine)**

Fitment to: Right hand side

Fitting time: Approximately 180 minutes

Special Tools:

- 95mm holesaw
- Pop rivet gun
- Sikaflex 227 adhesive sealant
- Step drill
- Masking tape

1	<p>Remove:</p> <ul style="list-style-type: none">• RHS wheelarch liner.• Grill.• RHS headlight.• RHS indicator and wiring loom.• Air intake ducting.• Air cleaner housing and mounting bracket.
2	<p>Tape the template to the upper rear corner of the right hand guard. Using a felt tip pen mark all hole positions. Remove template.</p>
3	<p>Drill a 4mm pilot hole for each hole position. Using the step drill, drill the 3 snorkel mounting hole positions to 16mm. Using the 95mm holesaw, drill the main hole for the snorkel snout. Deburr and paint all holes.</p>
4	<p>Position the holesaw centre fixture into the hole in the inner guard behind the headlight and mark the 2 hole positions. Drill a 1/8" hole for each position and fasten the holesaw centre fixture into position using screws (Item No. 7). With the holesaw centre fixture installed enlarge the existing hole using the 95mm holesaw. Deburr and paint hole. Install rubber edging to hole trimming any excess edging.</p>
5	<p>Screw the 3 mounting studs into the snorkel body inserts and fasten the upper mounting bracket to the snorkel body. Stick masking tape onto the 'A' pillar approximately in the upper mounting bracket position and carefully position the snorkel body onto the guard. With the snorkel correctly positioned mark the position of the upper mounting bracket on the masking tape. Remove the snorkel body.</p>
6	<p>Remove the bracket from the snorkel body and place the bracket onto the 'A' pillar. Mark the 3 mounting hole positions and drill the 3 marked holes on the 'A' pillar to 8mm. Deburr and paint holes.</p>
7	<p>Insert plastic body clips into the 'A' pillar and fasten the upper</p>

	mounting bracket to the 'A' pillar using screws (Item No. 7).
8	Relocate the side indicator loom through the rear hole in the inner guard using cable ties to secure the indicator loom to the other looms.
9	Measure back 25mm from the front air cleaner mounting bracket hole position and drill a 12mm hole. Deburr and paint hole. Position a spacer washer (Item No. 16) at each of the air cleaner mounting bracket hole positions. Fasten the air cleaner relocation mounting brackets into position then fasten the air cleaner mounting bracket to the relocation brackets.
10	Install the inner duct into position and apply a liberal amount of Sikaflex adhesive sealant to the inside of the duct. Apply Sikaflex adhesive sealant to the snorkel body snout to ensure a watertight seal between the snorkel body snout and inner duct. Install the snorkel body to the guard, guiding the snorkel body snout into the inner duct then fasten to the guard using necessary hardware. Fasten upper mounting bracket to the snorkel body.
11	Secure the inner duct to the snorkel body using S/T screw (Item No. 7). Ensure the inner duct is hard up against the shoulder on the snorkel body snout before securing to the snorkel body.
12	Drill a 5mm hole between the first and second internal ribs of the air cleaner housing 55mm down from the air filter element recess.
13	Position the hose and hose clamps onto the inner duct and install the air cleaner housing to the vehicle and fasten. Install the air cleaner entry duct. With the air cleaner entry duct correctly positioned, mark the hole position through the air cleaner housing onto the air cleaner entry duct side pad. Remove air cleaner entry duct and air cleaner housing.
14	Drill the marked hole position to 5mm. Apply Sikaflex adhesive sealant to the pad, to the air cleaner entry duct and the air cleaner housing inlet. Secure the air cleaner entry duct to the air cleaner housing using pop rivet (Item No. 18), ensuring a watertight connection between the air cleaner entry duct and air cleaner housing. Apply more sealant if required or remove any excess sealant to ensure a neat job.
15	Install the air cleaner housing to the air cleaner housing mounting bracket and fasten. Position the hose and hose clamps correctly and fasten to complete the connection of the inner duct to the air cleaner entry duct.

16 Re-install air cleaner element, air cleaner lid and secure. Re-install the headlight and grill. Re-install side indicator and re-connect loom. Check operation of the headlight and side indicator before installing the inner guard liner.





17 Install the air ram assembly to the snorkel body and fasten clamp.

WARNING: IT IS THE INSTALLERS RESPONSIBILITY TO ENSURE ALL CONNECTIONS ARE WATER TIGHT.

ITEM	IMAGE	DESCRIPTION	QTY	PART NO.
1		BODY - SNORKEL	1	565-133-000
2		3 1/2" AIR RAM ASSEMBLY	1	000-135-650
3		DUCT - INNER	1	565-124-000
4		DUCT - AIR CLEANER ENTRY	1	565-123-000

5		BRACKET - UPPER MOUNTING	1	565- 032- 000
6		BOLT - HEX 6mm x 1.0mm x 14mm	2	000- 002- 100
7		SCREW - S/T 4.2mm x 13mm	6	000- 951
8		INSERT - PLASTIC	3	000- 960
9		STUD - S/S 8m x 1.25mm x 25mm O/L	3	000- 110
10		WASHER - BODY 8mm x 30mm	3	000- 311
11		NUT - NYLOC 8mm x 1.25mm	3	000- 205

12		HOSE - RUBBER 90mmID x 40mm	1	000-807-157
13		CLAMP - HOSE 80/100mm	2	000-909
14		BRACKET - AIR CLEANER RELOCATION	1	565-031-000
15		BRACKET - AIR CLEANER RELOCATION	1	565-031-100
16		WASHER - BODY 8mm x 24mm x 3mm	3	000-335
17		BOLT - HEX 6mm x 1.0mm x 20mm (SEMS)	3	000-003-100
18		POP RIVET 4.8mm x 21mm	1	000-958-400

19		EDGING - RUBBER 400mm	1	000- 953- 040
20		CABLE TIE - 178mm	3	000- 987- 178
21		FIXTURE - HOLESAW CENTRE	1	565- 017- 100
22		TEMPLATE	1	565- 017- 000

23		HOSE CLAMP - SIZE 56 (BLACK)	1	000- 914/B
----	---	---------------------------------	---	---------------